



[View this email in your browser](#)

Terminal Construction Update

October 2019



TRAVEL ALERTS

- Terminal Construction is **not** expected to impact travel.
- **Per TSA regulations, curbside is for immediate pick-up and drop-off only — no parking or unattended vehicles are permitted.** Please utilize the short-term and cell phone parking lots for extended passenger pick-up/drop-off.



Bear With Us...

We're on the path to a brand-new terminal — one step at a time!

The Missoula valley is growing, which means passengers are using the Missoula Airport more than ever! We're working to build an airport that meets the needs of modern travelers to and from western Montana.

Below, you'll find updates and information on our terminal expansion project.



Progress

In Progress...

- **Access Road – 75% Complete**
 - Underground utility work has been completed in front of the terminal (No more construction cones or detours!)
 - Concrete curbing, sidewalks and the first layer of asphalt have been laid for the terminal access road. This expanded roadway will open in fall '20.
 - Access Road work will be suspended as we enter winter but will resume and be completed next fall.
- **South Concourse Excavation & Foundation - 75% Complete**
 - Demolition of the old security checkpoint and excavation for the South Concourse have been completed.
 - Installation of underground plumbing and utilities are in the final stages of completion and testing.
 - Daily progress continues forming and pouring foundation footings and walls.
- **Food and Beverage Concessions RFP**
 - The Missoula Airport is currently accepting proposals from qualified firms to operate food and beverage concessions in the new South Concourse at the Missoula Airport. [Click Here](#) for more information!
- **Name the Bear – Meet Charlo!**
 - We completed voting last Spring and have given our beloved airport bear a name, Charlo! Congratulations to Michael Thomas on your winning "Name the Bear" contest submission. Don't forget to post your selfies with Charlo! #MSObear

Already Done...

- **Terminal Financing RFP – Complete**
 - Please join us in welcoming First Security Bank to Team MSO!
 - First Security Bank will be supporting the project with \$35 million in financing over the next 20 years.

- **West Screening Checkpoint Demolition – Complete**
 - Demolition of the west screening checkpoint was completed this spring in preparation for the south concourse foundation excavation.
- **South Concourse Ground Breaking – Complete**
 - This spring we officially broke ground on our new terminal — a momentous occasion!
- **TSA Checkpoint Relocation – Complete**
 - The TSA checkpoint has been relocated to the middle of the terminal building for passenger convenience during construction.
- **Baggage Claim Grab and Go – Complete**
 - You spoke and we listened! You can now order from the full restaurant menu, and even enjoy a beer while you wait for your bag or loved ones!

Coming Soon...

- **Vertical Construction**
 - Later this fall, work will commence on vertical construction of the "South Paw" Concourse. Get ready to see your new airport rise from the ground as structural steel is assembled!
 - The new concourse will feature a ticketing lobby, security checkpoint, 5 boarding gates, multiple concession options and expansive views of our surrounding mountains.
- **Boarding Walkway Art Display**
 - Our temporary boarding walkway for Gate 1 will soon be home to numerous art pieces exhibited for the enjoyment of arriving and departing passengers. To have your art featured, please reach out [here](#)!
- **New Website Launch**
 - Next spring, we will be launching our new website which will feature an improved flight status tracker, interactive FAQs and terminal construction photo galleries!

Stay tuned for updated terminal renderings this winter!

Things to Know for Your Next Trip to MSO

Departing Flights

- Airlines recommend checking in at least 2 hours prior to your scheduled departure time.

Meeting Arriving Passengers

- We know you'll be anxious to pick up your arriving friends and relatives, but please remember that the curbside area is for immediate pick-up and drop-off only — **no parking or unattended vehicles are permitted on the airport curbside.**

- There is free parking for 15 minutes in our short-term lot, or you can use one of the of spaces in our cell phone waiting lot.

Real ID

- Beginning **October 1, 2020**, every air traveler 18 years of age and older will need a REAL ID-compliant driver's license, passport, or another [acceptable form of ID](#) to fly within the United States.

For questions, please visit: <https://www.tsa.gov/real-id>

Photo Gallery



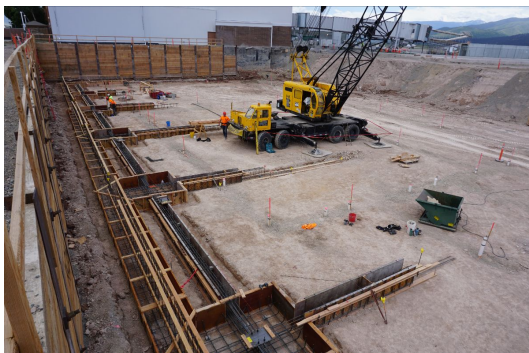
Demolition of old screening checkpoint building on west end of airport



Future entrance for the new terminal and parking lots



South Concourse aerial overview





Stay Informed

We've created a place where you can stay up-to-date on the construction taking place at the Missoula Airport: www.flymissoula.com/construction.

There, you can see photos of our progress, get alerts, read news, and more.

If you have questions, you can reach out to us via email at contactus@flymissoula.com or by text/phone at 406-521-3009.



Keep in touch with us!

Visit our website, or find us on Facebook, Twitter and Instagram!



Copyright © 2019 Missoula Airport, All rights reserved.

Want to change how you receive these emails?

You can [update your preferences](#) or [unsubscribe from this list](#)