



July 2022

Terminal Expansion Project

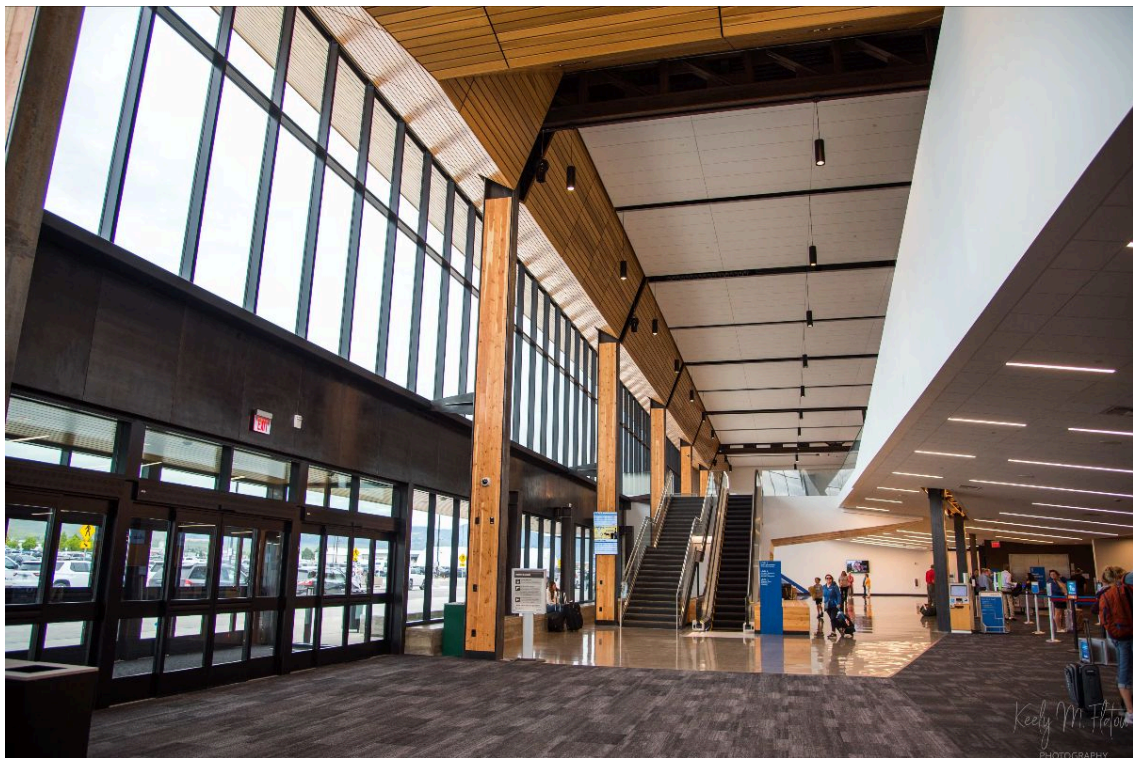
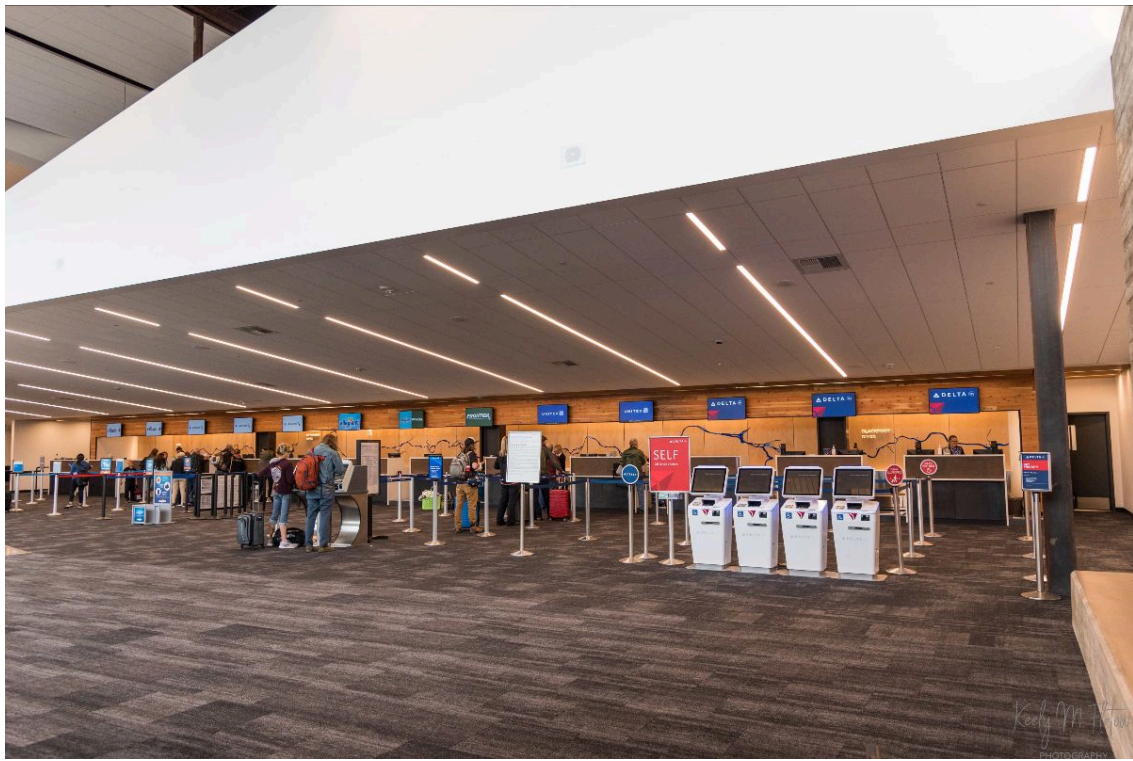
New Terminal Building is Open!

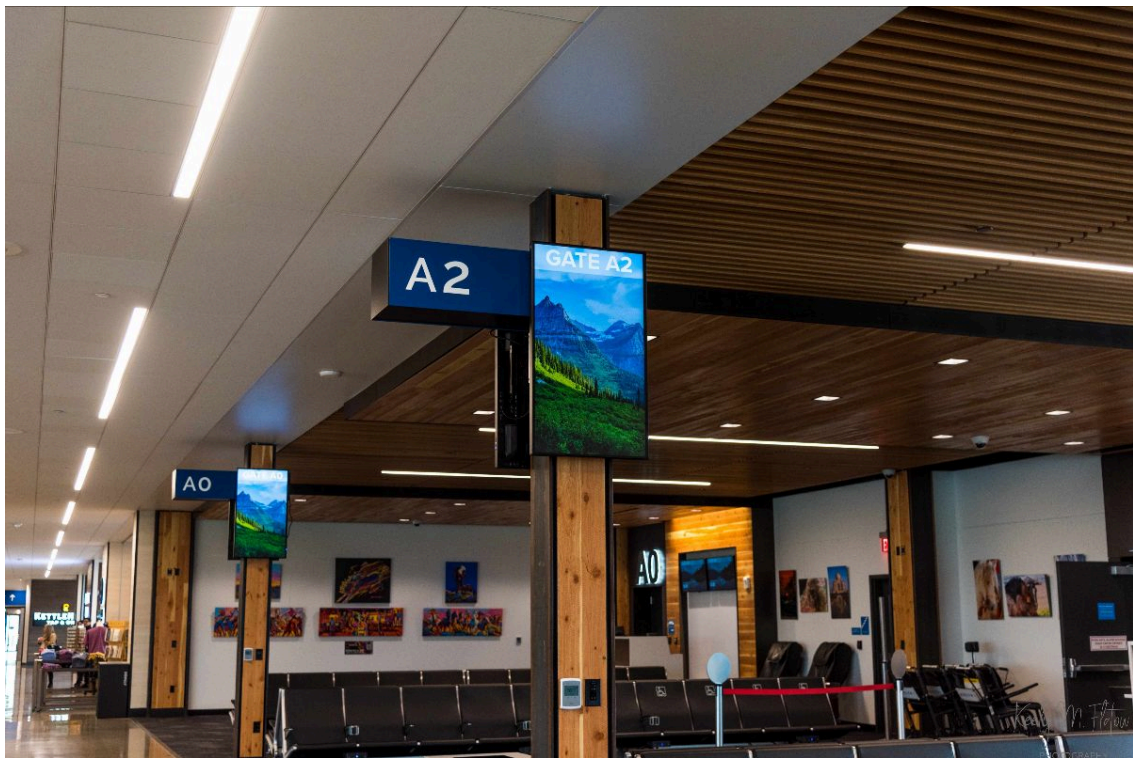
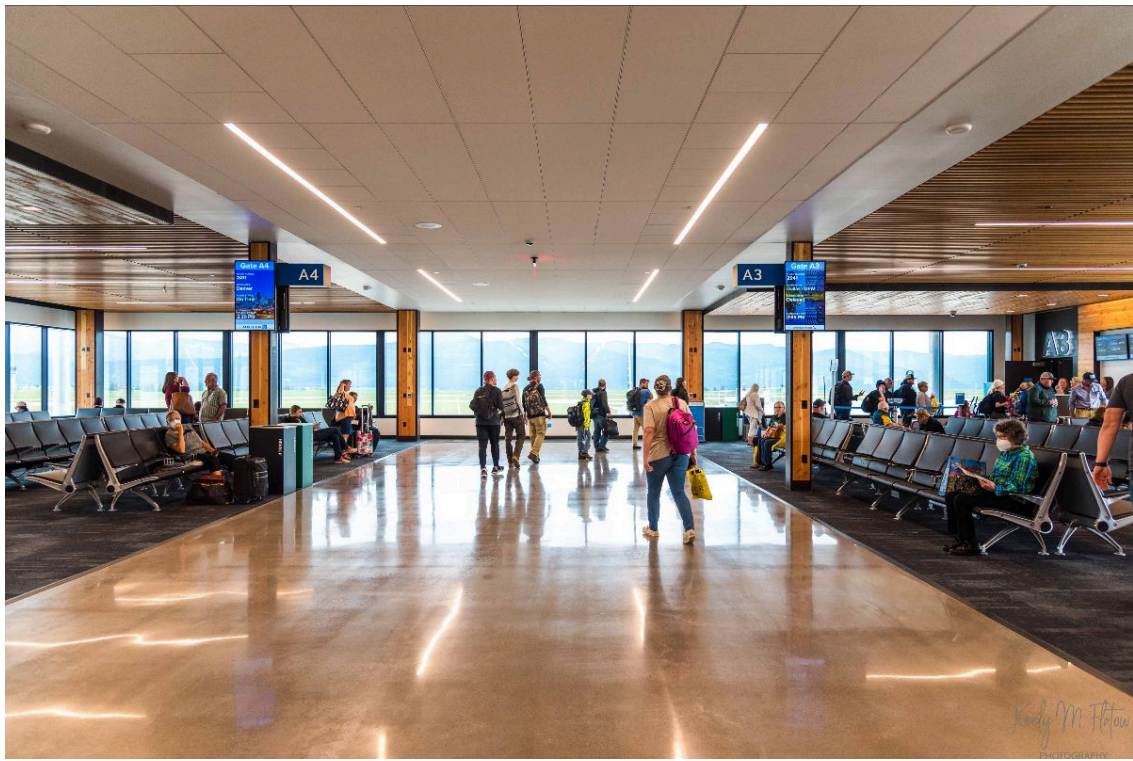
The new terminal at the Missoula Montana Airport opened to travelers on June 8, 2022! The project had no impact on local taxes, finished under budget, and on schedule for the peak travel season.

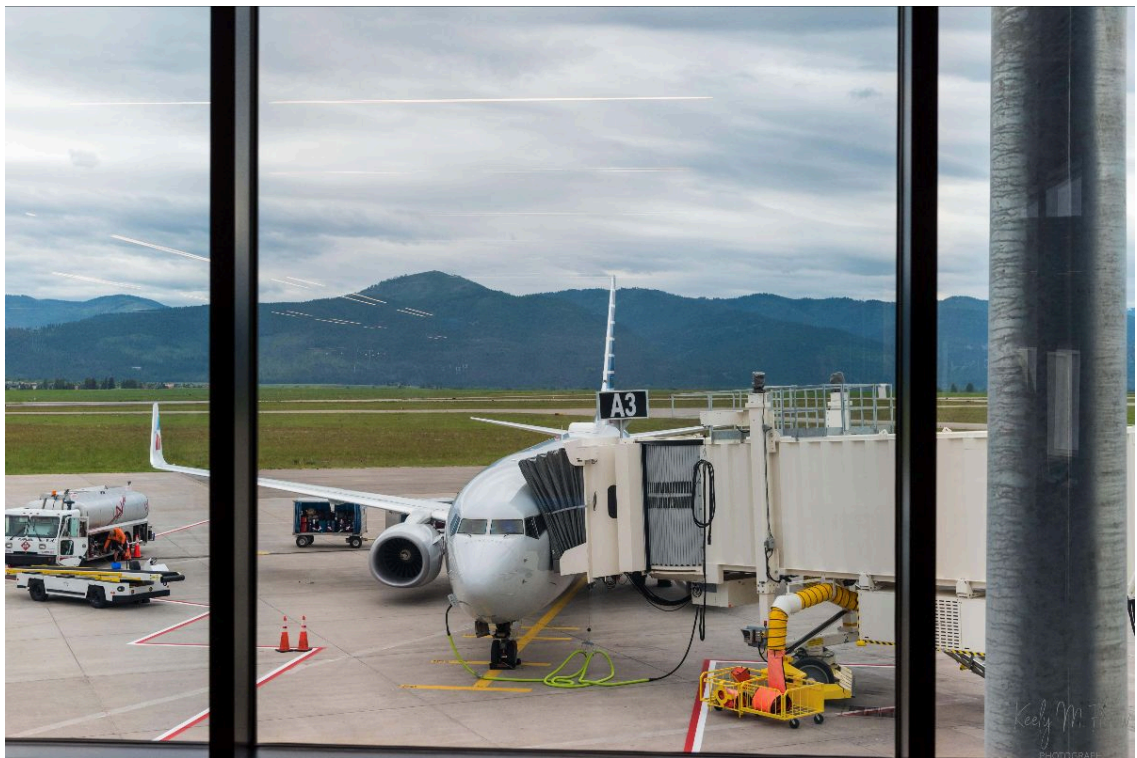
Here is a look at Opening Day & some of the building's amazing features captured by [Keely M. Flatow Photography](#).

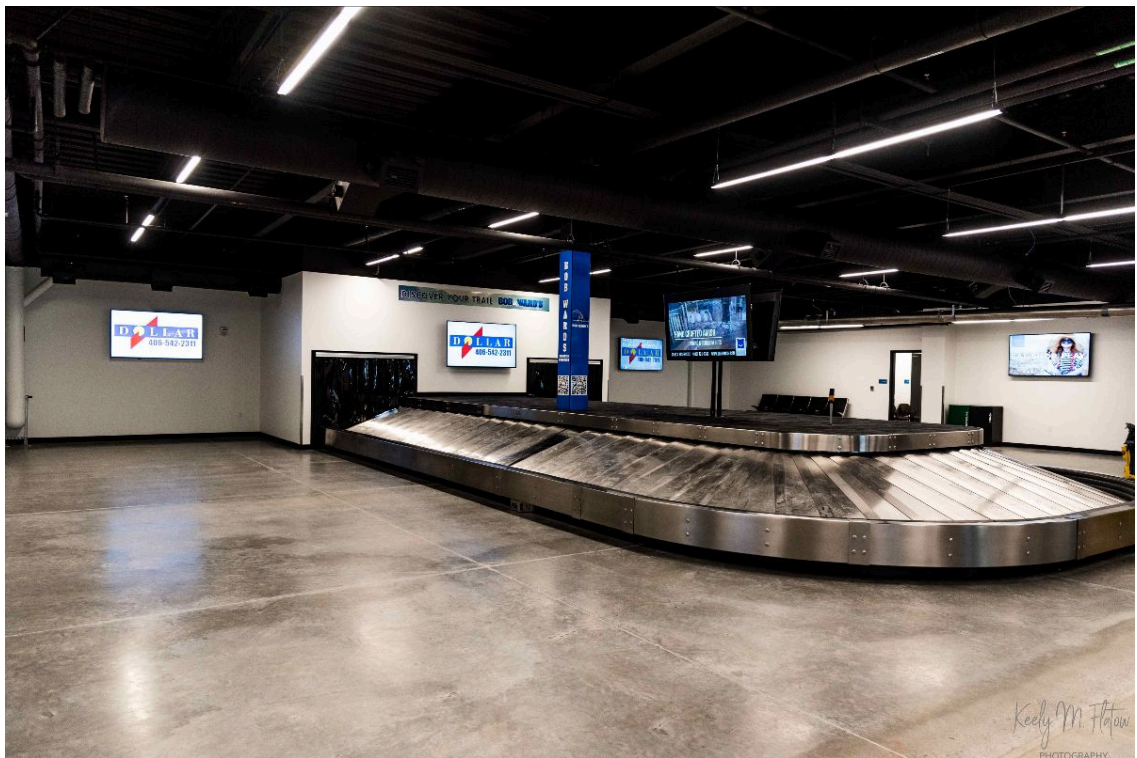
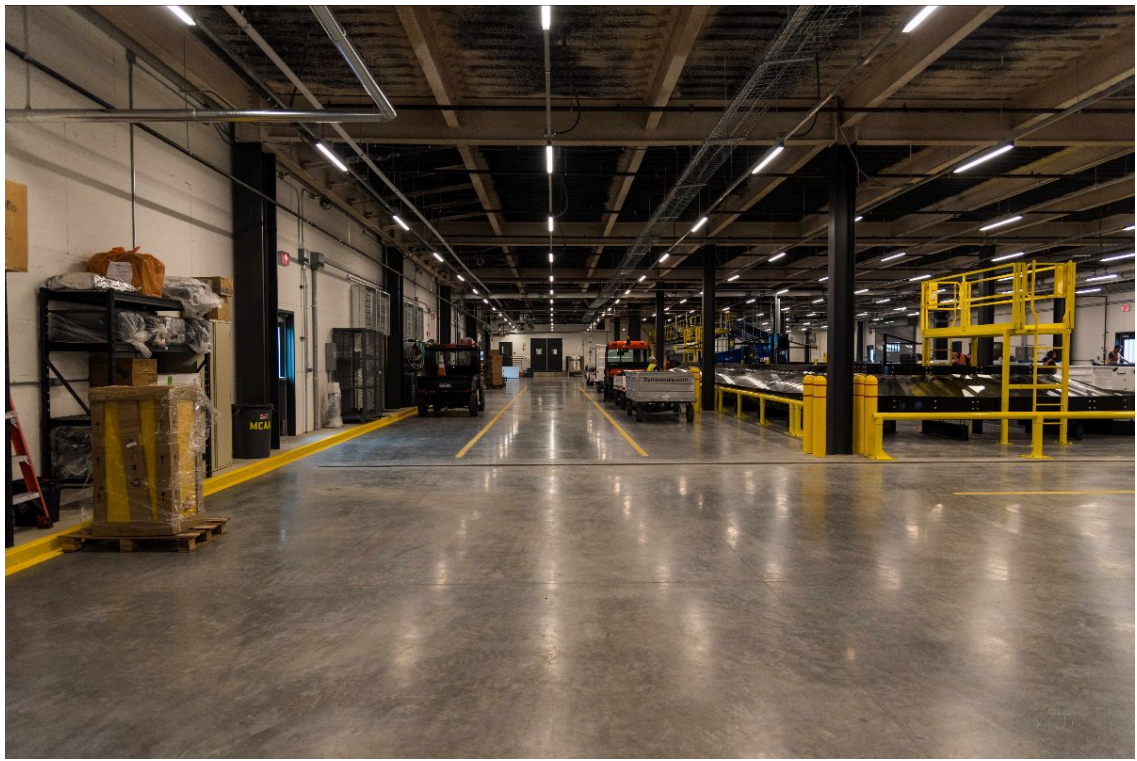
Photo Gallery















Thank You

Years of hard work and great partnerships made this project possible. We are incredibly grateful for the collaboration at federal, state and local levels supporting Team MSO through this project. Thank you!

Our Partners:



Other Happenings at MSO

Global Entry Enrollment Event

Missoula Montana Airport will be hosting a [Global Entry Enrollment Event](#) coming up at the end of August.

Dates & Hours:

Aug. 30 – Sept. 1, 2022, 9 a.m. – 5 p.m.

Location:

Missoula Montana Airport – 5225 U.S Highway 10 W Missoula, MT
Mission Mountain Conference Room

Event Sign Up:

<https://tpe.dhs.gov/>

Parking:

Park in short-term lot, enter terminal and proceed to the third floor.
Parking will be validated for interviewees.

[Global Entry](#) is a U.S. Customs and Border Protection (CBP) program that allows expedited clearance for pre-approved, low-risk travelers upon arrival in the United States. Members enter the United States through automatic kiosks.

Summer Getaway

Four seasonal routes to California started up in June -- just in time for a summer trip! You can now get to [San Francisco](#) & [San Diego](#) on [Alaska Airlines](#), and [Los Angeles](#) & [Oakland](#) on [Allegiant Airlines](#), nonstop, out of MSO!



