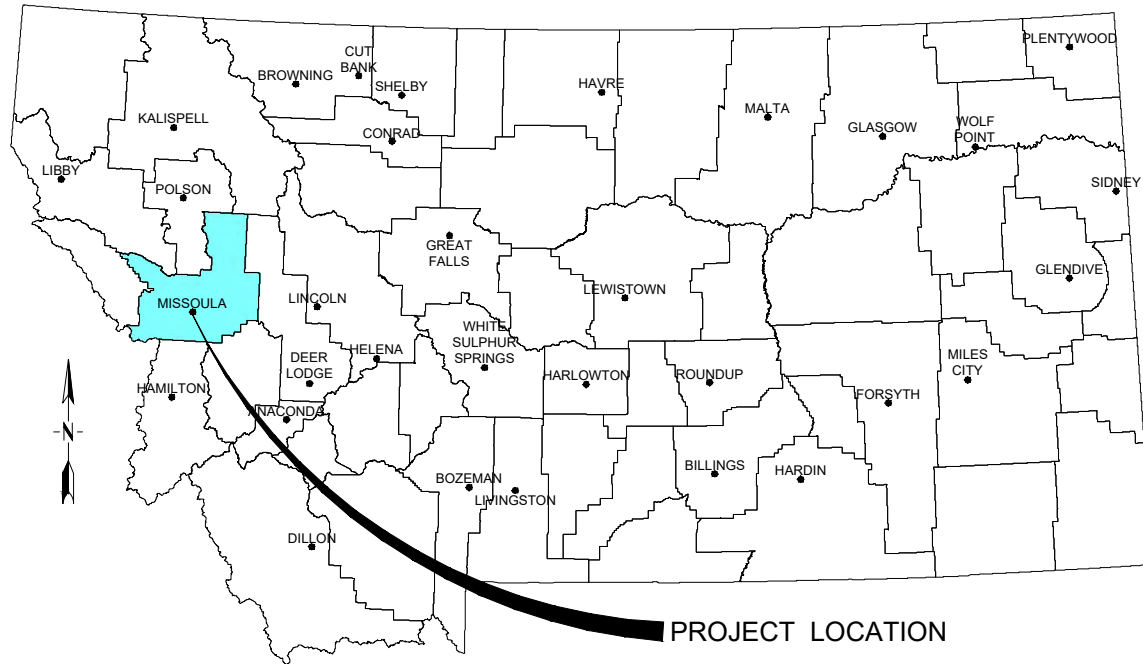


AIRPORT LAYOUT PLAN

MISSOULA MONTANA AIRPORT

MISSOULA, MONTANA

JANUARY 2026



LOCATION MAP
NOT TO SCALE

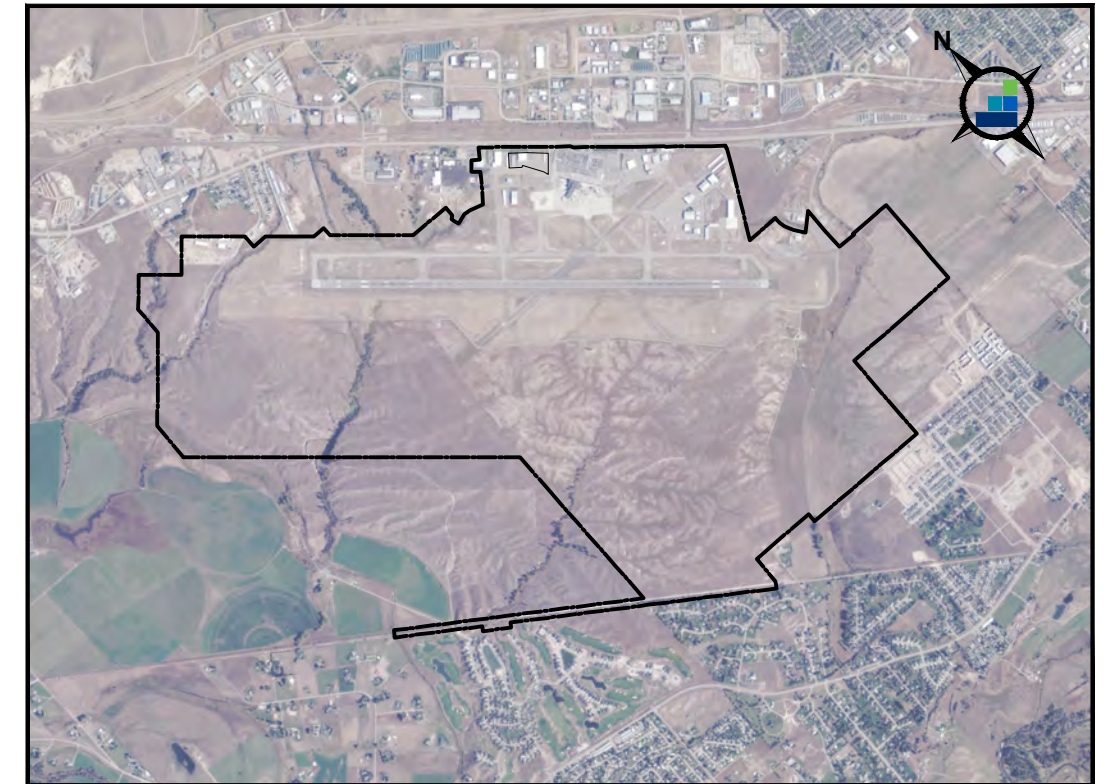
PREPARED BY:



Morrison
Maierle

engineers ■ surveyors ■ planners ■ scientists

1055 Mount Avenue, Missoula, MT 59801
406.542.8880 www.m-m.net



VICINITY MAP
NOT TO SCALE

PHOTO DATE: 2023

INDEX OF SHEETS

SHEET NUMBER	SHEET TITLE
--	COVER SHEET
1	DATA SHEET
2	EXISTING AIRPORT LAYOUT PLAN
3	FUTURE AIRPORT LAYOUT PLAN
4	TERMINAL AREA PLAN
5	AIRSPACE LAYOUT FUTURE PART 77
6	AIRSPACE DRAWING- RUNWAY 12L-30R AND 12R-30L PROFILE
7	INNER APPROACH SURFACE - RUNWAY 12L PLAN AND PROFILE
8	INNER APPROACH SURFACE - RUNWAY 30R PLAN AND PROFILE
9	INNER APPROACH SURFACE - RUNWAY 12R PLAN AND PROFILE
10	INNER APPROACH SURFACE - RUNWAY 30L PLAN AND PROFILE
11	DEPARTURE SURFACE RUNWAY 12L-30R PLAN AND PROFILE
12	LAND USE PLAN
13	PROPERTY MAP EXHIBIT A
14	PROPERTY MAP EXHIBIT A DESCRIPTION

AIRPORT APPROVAL SIGNATURE
Approved: _____ Date _____

© This document was prepared by Morrison-Maierle and may contain confidential or privileged information. Morrison-Maierle, Inc. retains all common law, statutory, and reserved rights including the copyright thereto. Unauthorized use of this document or changes are strictly prohibited and may be unlawful.

REVISIONS			
NO.	DESCRIPTION	BY	DATE

AIRPORT DATA

Table with 3 columns: ITEM, EXISTING, ULTIMATE. Rows include Airport Reference Code (ARC), Mean Max Temp, Airport Elevation, Airport Navaids, Airport Reference Point (ARP) - Latitude and Longitude, Miscellaneous Facilities, Critical Aircraft, Airport Magnetic Variation, NPIAS Service Level, and State Equivalent Service Role.

DECLARED DISTANCES (EXISTING & ULTIMATE)

Table with 5 columns: RUNWAY IDENTIFICATION, 12L, 30R, 12R, 30L. Rows include TORA, TODA, ASDA, LDA, LDA-APPROACH END RSA LENGTH, LDA-STOP END RSA LENGTH, and RSA LENGTH.

1. RUNWAY 8-26 IS TO BE CLOSED AND REMOVED FOR ULTIMATE.

GENERAL NOTES

- 1. ALP PREPARED USING DESIGN CRITERIA FROM FAA ADVISORY CIRCULAR 150/5300-13B "AIRPORT DESIGN" CHANGE 1 AND FAR PART 77 "OBJECTS AFFECTING NAVIGABLE AIRSPACE".
2. ELEVATIONS (NAVD88) AND DISTANCES IN FEET, APPROXIMATE, FROM MAPPING.
3. LATITUDE AND LONGITUDES (NAD83) CONVERTED TO STATE PLANE COORDINATES.

EXISTING RUNWAY END COORDINATES

Table with 6 columns: RUNWAY END, RDC, LATITUDE, LONGITUDE, ELEVATION, TRUE BEARING. Rows for 12, 30R, and 30L.

- 1. EXISTING RUNWAY LATITUDE, LONGITUDE, & ELEVATION FROM LOCAL SURVEY.
2. TRUE BEARINGS DETERMINED USING FCC TERMINAL COORDINATES PROGRAM.

EXISTING RUNWAY DATA

Table with 7 columns: RUNWAY, LENGTH, WIDTH, ELEVATION, EFF. GRAD., SURFACE, PCR, STRENGTH. Rows for 12/30R and 12R/30L.

- 1. LENGTHS DETERMINED USING LAT/LONGS IN GEO83 PROGRAM.
2. PAVEMENT STRENGTH AS LISTED IN THE AIRPORT MASTER RECORD-FAA FORM 5010.

EXISTING RUNWAY DESIGN STANDARDS

Table with 5 columns: RUNWAY END, RUNWAY PROTECTION ZONE, SAFETY AREA, OBJECT FREE AREA, OBSTACLE FREE ZONE. Rows for 12 and 30.

* LENGTH BEYOND RUNWAY END. SURFACE EXTENDS FULL RUNWAY LENGTH.

EXISTING DEPARTURE SURFACES

Table with 5 columns: RUNWAY END, CAT, DIMENSIONS, DISTANCE FROM RUNWAY END, SLOPE. Rows for 12 and 30.

EXISTING TERPS SURFACES

Table with 5 columns: RUNWAY END, CAT, VISIBILITY MINIMUMS, DIMENSIONS, DISTANCE FROM RUNWAY END, SLOPE. Rows for 12 and 30.

EXISTING NAVIGATIONAL AIDS

Table with 5 columns: RUNWAY END, MARKING, LIGHTING, VISUAL NAVAIDS, ELECTRONIC NAVAIDS. Rows for 12 and 30.

EXISTING INSTRUMENT APPROACH PROCEDURES

Table with 6 columns: RUNWAY END, APPROACH, VISIBILITY MINIMUMS, INSTRUMENTATION, TOUCHDOWN ZONE ELEV, AERONAUTICAL SURVEY REQ. Rows for 12 and 30.

EXISTING FAR PART 77 APPROACH SURFACES

Table with 4 columns: RUNWAY END, DIMENSIONS, DISTANCE FROM RUNWAY END, SLOPE. Rows for 12 and 30.

* PRECISION APPROACH CONSISTS OF MULTIPLE SURFACES. SEE PART 77 SHEET.

ULTIMATE RUNWAY END COORDINATES

Table with 6 columns: RUNWAY END, RDC, LATITUDE, LONGITUDE, ELEVATION, TRUE BEARING. Rows for 12L, 30R, 12R, and 30L.

- 1. ULTIMATE RUNWAY LATITUDE, LONGITUDE, & ELEVATION FROM NGS PUBLICATIONS.
2. TRUE BEARINGS DETERMINED USING GEO83 PROGRAM.
3. RUNWAY 8-26 IS TO BE CLOSED AND REMOVED.

ULTIMATE RUNWAY DATA

Table with 7 columns: RUNWAY, LENGTH, WIDTH, ELEVATION, EFF. GRAD., SURFACE, PCR, STRENGTH. Rows for 12L/30R and 12R/30L.

- 1. LENGTHS DETERMINED USING LAT/LONGS IN GEO83 PROGRAM.
2. RUNWAY 8-26 IS TO BE CLOSED AND REMOVED.

ULTIMATE RUNWAY DESIGN STANDARDS

Table with 5 columns: RUNWAY END, RUNWAY PROTECTION ZONE, SAFETY AREA, OBJECT FREE AREA, OBSTACLE FREE ZONE. Rows for 12L, 30R, 12R, and 30L.

- 1. LENGTH BEYOND RUNWAY END. SURFACE EXTENDS FULL RUNWAY LENGTH.
2. RUNWAY 8-26 IS TO BE CLOSED AND REMOVED.

ULTIMATE DEPARTURE SURFACES

Table with 5 columns: RUNWAY END, CAT, DIMENSIONS, DISTANCE FROM RUNWAY END, SLOPE. Rows for 12L, 30R, 12R, and 30L.

- 1. RUNWAY 8-26 IS TO BE CLOSED AND REMOVED.

ULTIMATE TERPS SURFACES

Table with 6 columns: RUNWAY END, CAT, VISIBILITY MINIMUMS, DIMENSIONS, DISTANCE FROM RUNWAY END, SLOPE. Rows for 12L, 12R, 30R, and 30L.

- 1. RUNWAY 8-26 IS TO BE CLOSED AND REMOVED.

ULTIMATE NAVIGATIONAL AIDS

Table with 5 columns: RUNWAY END, MARKING, LIGHTING, VISUAL NAVAIDS, ELECTRONIC NAVAIDS. Rows for 12L, 30R, 12R, and 30L.

- 1. RUNWAY 8-26 IS TO BE CLOSED AND REMOVED.

ULTIMATE INSTRUMENT APPROACH PROCEDURES

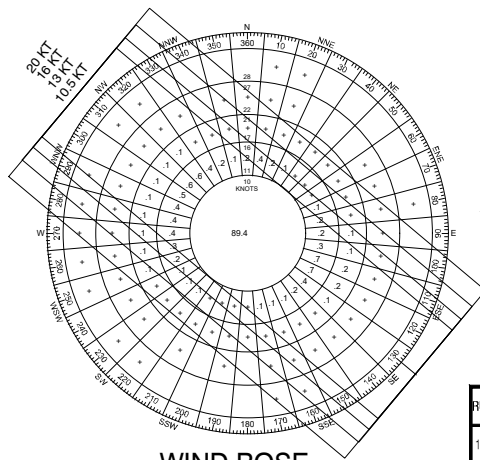
Table with 6 columns: RUNWAY END, APPROACH, VISIBILITY MINIMUMS, INSTRUMENTATION, TOUCHDOWN ZONE ELEV, AERONAUTICAL SURVEY REQ. Rows for 12L, 30R, 12R, and 30L.

- 1. RUNWAY 8-26 IS TO BE CLOSED AND REMOVED.

ULTIMATE FAR PART 77 APPROACH SURFACES

Table with 4 columns: RUNWAY END, DIMENSIONS, DISTANCE FROM RUNWAY END, SLOPE. Rows for 12L, 30R, 12R, and 30L.

- 1. PRECISION APPROACH CONSISTS OF MULTIPLE SURFACES. SEE PART 77 SHEET.

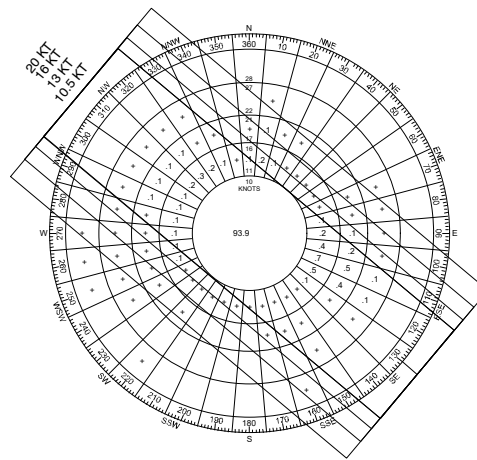


WIND ROSE ALL WEATHER CONDITIONS

WIND COVERAGE

Table with 6 columns: RUNWAY, TRUE BEARING, CROSSWIND COMPONENT, % COVERAGE (ALL WEATHER), IFR, VFR. Rows for RW 12-30 and RW 12R-30L.

- 1. SOURCE OF DATA: MISSOULA INTERNATIONAL AIRPOR (USAF-727730, WBAN-24153) FOR YEARS 2015-2024.



WIND ROSE IFR CONDITIONS

CRITICAL AIRCRAFT

Table with 7 columns: RUNWAY, ARC*, DESIGN AIRCRAFT, APRCH SPEED, WING SPAN, LENGTH, TAIL HEIGHT, MAXIMUM T/O WEIGHT. Rows for 12L/30R and 12R/30L.

- * ARC-AIRPORT REFERENCE CODE. DESIGN AIRCRAFT DESIGNATED BY: APPROACH SPEED: B AT LEAST 91 KNOTS, LESS THAN 121 KNOTS. C AT LEAST 121 KNOTS, LESS THAN 141 KNOTS. D AT LEAST 141 KNOTS, LESS THAN 166 KNOTS. WINGSPAN: I LESS THAN 49 FEET. II AT LEAST 49 FEET, LESS THAN 79 FEET. III AT LEAST 79 FEET, LESS THAN 118 FEET. IV AT LEAST 118 FEET, LESS THAN 171 FEET.

TAXIWAY DATA

Table with 13 columns: TAXIWAY IDENTIFICATION, A, A1, A2, A3, A4, A5, A6, B1, B2, C, D, E, F, G, H, I. Rows for TAXIWAY/TAXILANE WIDTH, SAFETY AREA, OBJECT FREE AREA, MARGIN, SHOULDER, SEPARATION, and LIGHTING.

PART 77 PRECISION OBSTACLE FREE ZONE

Table with 4 columns: RUNWAY END, INNER-APPROACH OFZ, INNER-TRANSITIONAL OFZ, PRECISION OFZ. Rows for 12L, 30R, 12R, and 30L.

- 1. INNER-APPROACH OFZ APPLIES TO RUNWAY END WITH AN APPROACH LIGHT SYSTEM.
2. INNER-TRANSITIONAL OFZ AND PRECISION OFZ APPLY TO RUNWAY END WITH A PRECISION APPROACH.
* DIMENSION REPRESENTS THE FAR END WIDTH OF THE INNER-TRANSITIONAL OFZ.

NON-STANDARD CONDITIONS

Table with 2 columns: DESCRIPTION, REMARKS. Row describing runway centerline of sight and TW-A1 exceeds threshold.

FAA REVIEW 01/2026

M:\3389000-MASTER\PL2024\3389000-01.DWG

VERIFY SCALE AND COLOR! THIS SHEET MAY BE REDUCED AND IS INTENDED TO BE IN COLOR. THE BAR BELOW WILL MEASURE ONE INCH AT ORIGINAL DESIGN SCALE AND RED, GREEN, AND BLUE WILL BE VISIBLE IF REPRODUCED CORRECTLY. MODIFY SCALE ACCORDINGLY!

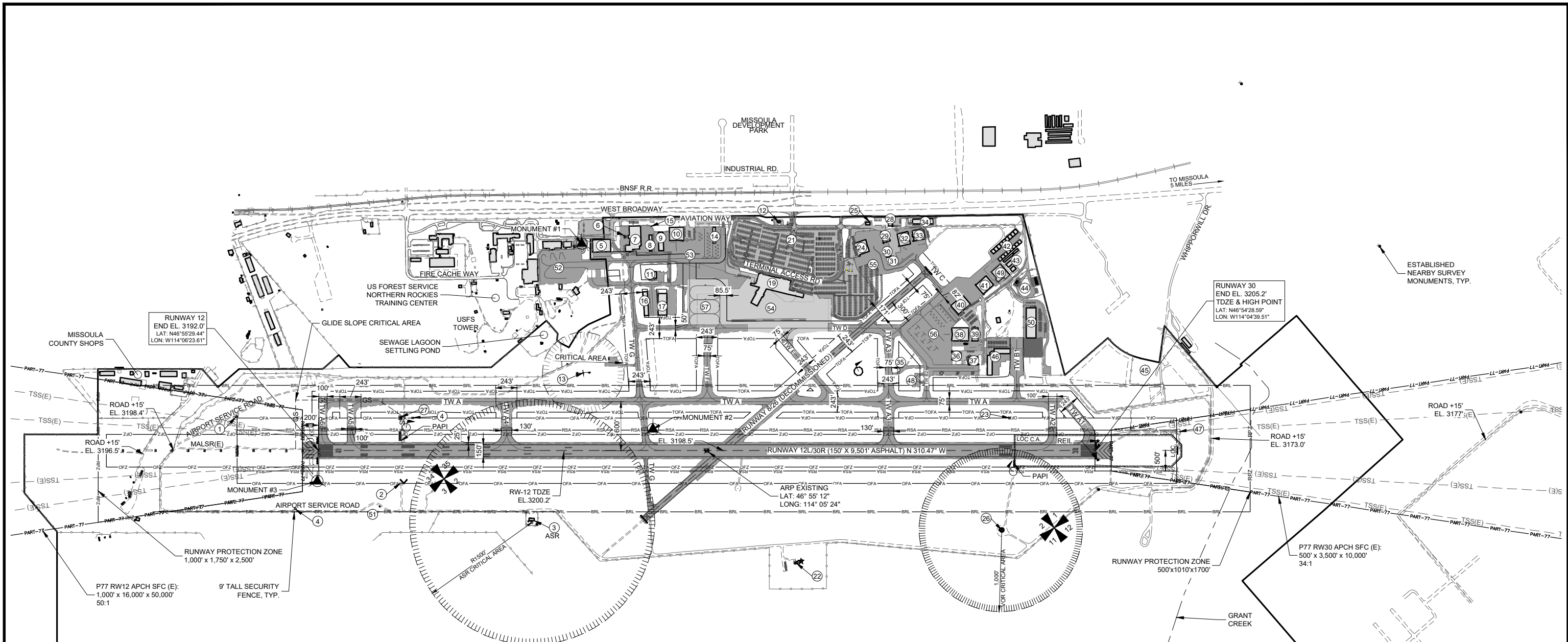
Table with 4 columns: NO., DESCRIPTION, BY, DATE. Section for REVISIONS.



DRAWN BY: KDK
DSGN BY: TSR
APPR BY: SPS
DATE: 01/2026
Q.C. REVIEW BY: SE
DATE: 10/2025

MISSOULA MONTANA AIRPORT AIRPORT LAYOUT PLAN MONTANA DATA SHEET

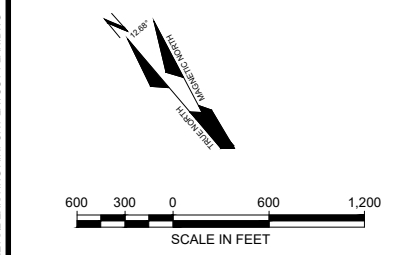
PROJECT NUMBER 3366.038 SHEET NUMBER 1 DRAWING NUMBER 1



LAYOUT PLAN LEGEND	
	EXISTING
AIRPORT PROPERTY LINE	---
AIRPORT SECURITY FENCE	---o---o---
ON AIRPORT PROPERTY BUILDINGS	▬
AIRFIELD PAVEMENT	▬
AIRFIELD PAVEMENT (TO BE REMOVED)	▬
PAVED ROADS	▬
RUNWAY PROTECTION ZONE (RPZ)	▬
BUILDING RESTRICTION LINE (BRL)	▬
RUNWAY SAFETY AREA (RSA)	▬
RUNWAY OBJECT FREE AREA (ROFA)	▬
RUNWAY OBSTACLE FREE ZONE (OFZ)	▬
TAXIWAY OBJECT FREE AREA (TOFA)	▬
GLIDE SLOPE CRITICAL AREA	G
LOCALIZER CRITICAL AREA	▬
PART 77 APPROACH SURFACE	▬
TERPS/THRESHOLD SITING SURFACE	▬
SECTION CORNER	⊞
SURVEY MONUMENT	⊞
AIRPORT BEACON	⊞
LIGHTED WIND CONE & SEGMENTED CIRCLE	⊞
AUTOMATED SURFACE OBSERVATION SYSTEM (ASOS)	⊞
PRECISION APPROACH PATH INDICATOR (PAPI)	⊞
DEVELOPMENT AREAS	N/A
AIRPORT REFERENCE POINT (ARP)	⊞
RUNWAY END IDENTIFIER LIGHTS (REIL)	⊞
ASR/VOR CRITICAL AREA	▬
RUNWAY VISUAL RANGE (RVR)	▬

FACILITIES LEGEND			
NO.	DESCRIPTION	NO.	DESCRIPTION
1	MALSR BUILDING	20	RESERVED
2	RUNWAY VISUAL RANGE	21	TERMINAL PARKING LOT EXIT CANOPY
3	ASR-9 RADAR SITE	22	AIR TRAFFIC CONTROL TOWER AND BEACON
4	SCAN SYSTEM RPU (2)	23	SCAN SYSTEM RPU
5	AFD HANGAR	24	MINUTEMAN EAST HANGAR #2
6	OPERATIONS FUEL STORAGE	25	RENTAL CAR FUEL FACILITY
7	OPERATIONS BUILDING	26	VORTAC
8	KEMBEL / STEVENS HANGAR	27	GLIDE SLOPE
9	MINUTEMAN T-HANGAR #1	28	AIRPORT COMMERCIAL PROPERTY
10	MINUTEMAN HANGAR #1	29	MINUTEMAN HANGAR #4
11	LIFE FLIGHT HANGAR	30	MINUTEMAN / WASHINGTON CORP
12	LIQUID PLANET	31	MINUTEMAN / AEROTRONICS
13	ASOS	32	MUSEUM OF MOUNTAIN FLYING
14	MINUTEMAN EAST T-HANGAR	33	WASHINGTON CORP. HANGAR
15	AIRLINE LAV DUMP STATION	34	QUICK TURN AROUND FACILITY
16	DELTA GOLF HANGAR	35	AIRFIELD ELECTRICAL VAULT
17	DELTA HANGAR (BRETZ/KOSEN)	36	NORTHSTAR HANGAR
18	RESERVED	37	NORTHSTAR HANGAR
19	TERMINAL BUILDING (TOP EL. 3258')	38	NEPTUNE HANGAR
		39	NORTHSTAR ENGINE SHOPS
		40	NORTHSTAR HANGAR
		41	NORTHSTAR HANGAR
		42	RUNWAY-25 HANGARS
		43	CAR CONDO
		44	AVIATION FUEL & GLYCOL STORAGE
		45	ROCKY MOUNTAIN MECHANICAL
		46	LZ HANGARS
		47	ILS LOCALIZER TRANSMITTER BUILDING
		48	SELF FUELING STATION
		49	NORTHSTAR HANGAR
		50	FEDEX FACILITY
		51	PSO FIRING RANGE
		52	USFS APRON, 25,500 SY
		53	MINUTEMAN WEST APRON, 39,500 SY
		54	COMMERCIAL APRON, 66,000 SY
		55	MINUTEMAN EAST APRON, 19,500 SY
		56	NORTHSTAR APRON, 73,500 SY
		57	DEICING APRON, 35,000 SY

MONUMENT LOCATIONS			
MONUMENT NUMBER	STATE PLANE NORTH	STATE PLANE EAST	
MONUMENT #1 (NGS PACS "MISSOULA GPS")	1008575.211	822864.748	⊞
MONUMENT #2 (NGS "MISSOULA E")	1006335.222	821922.828	⊞
MONUMENT #3 TEMPORARY CONTROL	1008716.571	818518.147	⊞



FAA REVIEW
01/2026

VERIFY SCALE AND COLOR!
THIS SHEET MAY BE REDUCED AND IS INTENDED TO BE IN COLOR. THE BAR BELOW WILL MEASURE ONE INCH AT ORIGINAL DESIGN SCALE AND RED, GREEN, AND BLUE WILL BE VISIBLE IF REPRODUCED CORRECTLY.
MODIFY SCALE ACCORDINGLY!

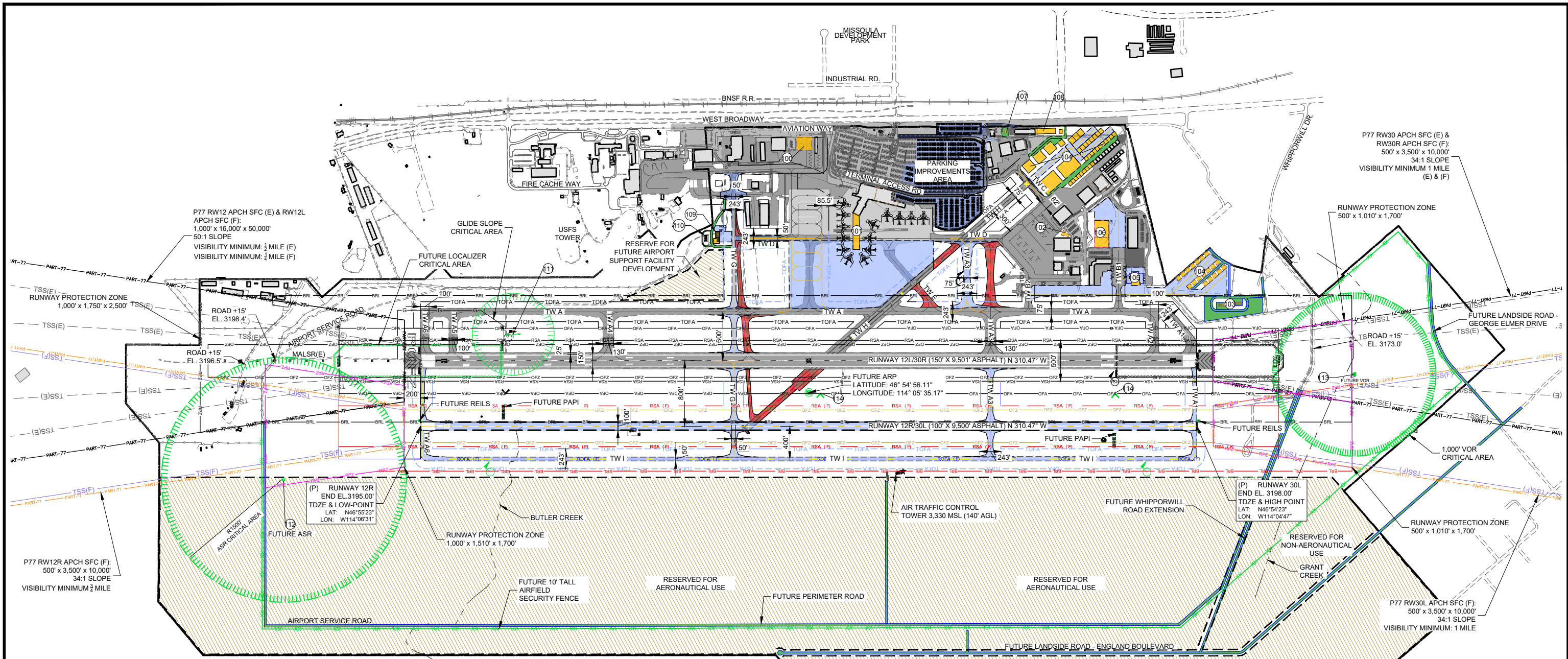
REVISIONS			
NO.	DESCRIPTION	BY	DATE



DRAWN BY: KDK
DSGN BY: TSR
APPR BY: SPS
DATE: 01/2026
Q.C. REVIEW BY: SE
DATE: 10/2025

MISSOULA MONTANA AIRPORT
AIRPORT LAYOUT PLAN
MISSOULA MONTANA
EXISTING AIRPORT LAYOUT PLAN

PROJECT NUMBER 3366.038
SHEET NUMBER 2
DRAWING NUMBER 2

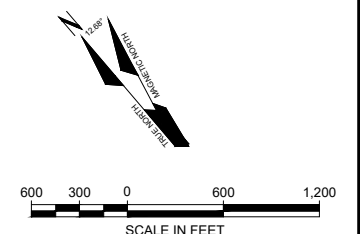


LAYOUT PLAN LEGEND

	EXISTING	FUTURE
AIRPORT PROPERTY LINE	---	---
AIRPORT SECURITY FENCE	---	---
ON AIRPORT PROPERTY BUILDINGS	---	---
AIRFIELD PAVEMENT	---	---
AIRFIELD PAVEMENT (TO BE REMOVED)	---	---
PAVED ROADS	---	---
RUNWAY PROTECTION ZONE (RPZ)	---	---
BUILDING RESTRICTION LINE (BRL)	---	---
RUNWAY SAFETY AREA (RSA)	---	---
RUNWAY OBJECT FREE AREA (ROFA)	---	---
RUNWAY OBSTACLE FREE ZONE (OFZ)	---	---
TAXIWAY OBJECT FREE AREA (TOFA)	---	---
GLIDE SLOPE CRITICAL AREA	---	---
LOCALIZER CRITICAL AREA	---	---
PART 77 APPROACH SURFACE	---	---
TERPS/THRESHOLD SITING SURFACE	---	---
SECTION CORNER	---	---
SURVEY MONUMENT	---	---
AIRPORT BEACON	---	---
LIGHTED WIND CONE & SEGMENTED CIRCLE	---	---
AUTOMATED SURFACE OBSERVATION SYSTEM (ASOS)	---	---
PRECISION APPROACH PATH INDICATOR (PAPI)	---	---
DEVELOPMENT AREAS	---	---
AIRPORT REFERENCE POINT (ARP)	---	---
RUNWAY END IDENTIFIER LIGHTS (REIL)	---	---
ASR/VOR/AVOS CRITICAL AREA	---	---
RUNWAY VISUAL RANGE (RVR)	---	---

FUTURE FACILITIES LEGEND

NO.	DESCRIPTION
100	FUTURE HANGAR
101	FUTURE TERMINAL EXPANSION
102	FUTURE NORTHSTAR OFFICE BUILDING
103	FUTURE RELOCATED FUEL FARM
104	FUTURE GA HANGARS
105	FUTURE HANGAR
106	FUTURE HANGAR
107	FUTURE RENTAL CAR FUEL FACILITY
108	FUTURE QUICK TURNAROUND FACILITY
109	FUTURE ARFF FACILITY
110	FUTURE CHEMICAL STORAGE FACILITY
111	FUTURE AWOS
112	FUTURE ASR
113	FUTURE VOR
114	FUTURE RVR



FAA REVIEW
01/2026

VERIFY SCALE AND COLOR!
THIS SHEET MAY BE REDUCED AND IS INTENDED TO BE IN COLOR. THE BAR BELOW WILL MEASURE ONE INCH AT ORIGINAL DESIGN SCALE AND RED, GREEN, AND BLUE WILL BE VISIBLE IF REPRODUCED CORRECTLY.
MODIFY SCALE ACCORDINGLY!

NO.	DESCRIPTION	BY	DATE



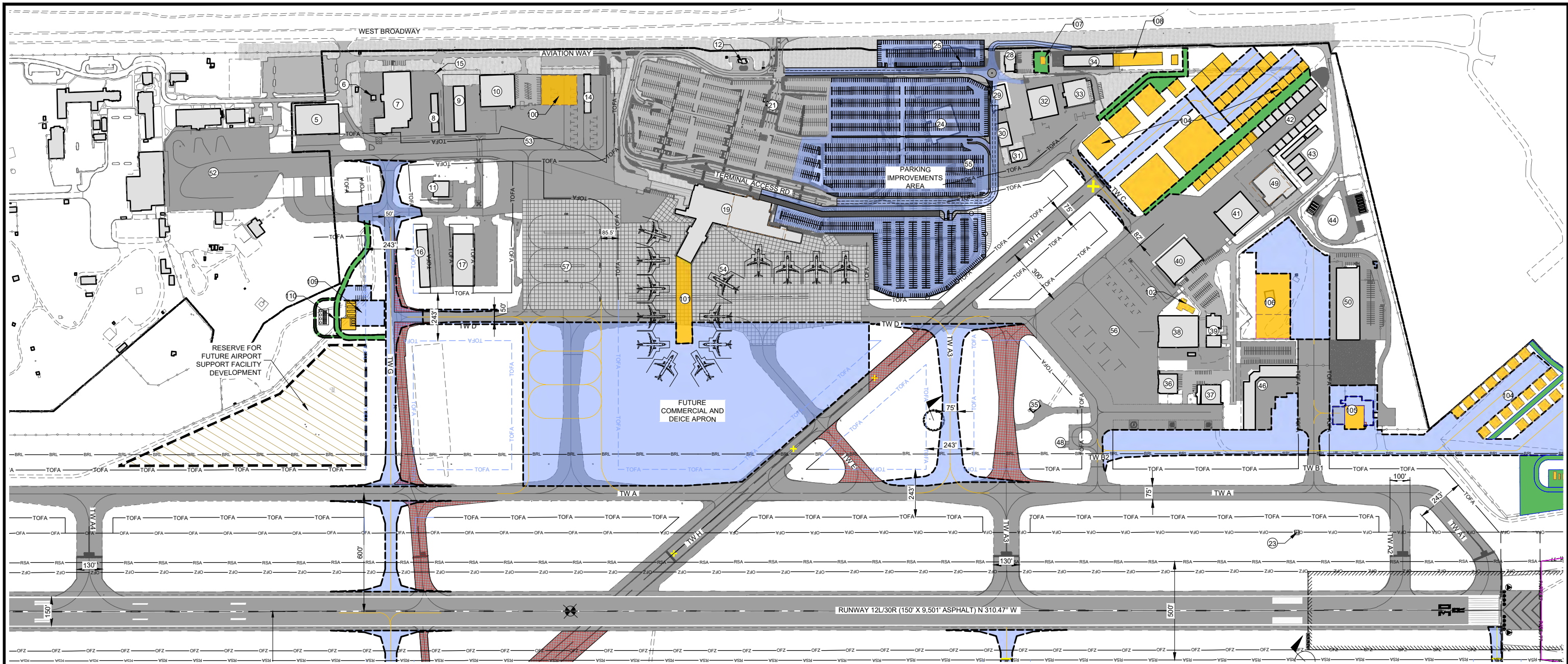
DRAWN BY: KDK
DSGN BY: TSR
APPR BY: SPS
DATE: 01/2026
Q.C. REVIEW BY: SE
DATE: 10/2025

MISSOULA MONTANA AIRPORT
AIRPORT LAYOUT PLAN
MONTANA

PROJECT NUMBER: 3366.038
SHEET NUMBER: 3
DRAWING NUMBER: 3

MISSOULA
FUTURE AIRPORT LAYOUT PLAN

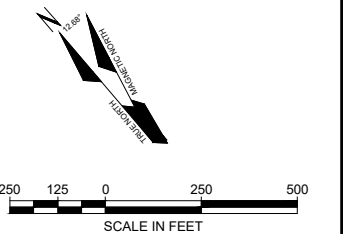
M:\3366\000-MAS\TERVALP\2024\SHEETS\3 FUTURE AIRPORT LAYOUT PLAN.DWG
PLOTTED BY: KEVIN KITTLESON ON Jan/16/2026



FACILITIES LEGEND			
NO.	DESCRIPTION	NO.	DESCRIPTION
1	MALSR BUILDING	20	RESERVED
2	RUNWAY VISUAL RANGE	21	TERMINAL PARKING LOT EXIT CANOPY
3	ASR-9 RADAR SITE	22	AIR TRAFFIC CONTROL TOWER AND BEACON
4	SCAN SYSTEM RPU (2)	23	SCAN SYSTEM RPU
5	AFD HANGAR	24	MINUTEMAN EAST HANGAR #2
6	OPERATIONS FUEL STORAGE	25	RENTAL CAR FUEL FACILITY
7	OPERATIONS BUILDING	26	VORTAC
8	KEMBEL / STEVENS HANGAR	27	GLIDE SLOPE
9	MINUTEMAN T-HANGAR #1	28	AIRPORT COMMERCIAL PROPERTY
10	MINUTEMAN HANGAR #1	29	MINUTEMAN HANGAR #4
11	LIFE FLIGHT HANGAR	30	MINUTEMAN / WASHINGTON CORP
12	LIQUID PLANET	31	MINUTEMAN / AEROTRONICS
13	ASOS	32	MUSEUM OF MOUNTAIN FLYING
14	MINUTEMAN EAST T-HANGAR	33	WASHINGTON CORP. HANGAR
15	AIRLINE LAV DUMP STATION	34	QUICK TURN AROUND FACILITY
16	DELTA GOLF HANGAR	35	AIRFIELD ELECTRICAL VAULT
17	DELTA HANGAR (BRETZ/KOSENKA)	36	NORTHSTAR HANGAR
18	RESERVED	37	NORTHSTAR HANGAR
19	TERMINAL BUILDING (TOP EL. 3259')	38	NEPTUNE HANGAR
		39	NORTHSTAR ENGINE SHOPS
		40	FUTURE TERMINAL HANGAR
		41	NORTHSTAR HANGAR
		42	RUNWAY-25 HANGARS
		43	CAR CONDO
		44	AVIATION FUEL & GLYCOL STORAGE
		45	ROCKY MOUNTAIN MECHANICAL
		46	LZ HANGARS
		47	ILS LOCALIZER TRANSMITTER BUILDING
		48	SELF FUELING STATION
		49	NORTHSTAR HANGAR
		50	FEDEX FACILITY
		51	PSO FIRING RANGE
		52	USFS APRON, 25,500 SY
		53	MINUTE MAN WEST APRON, 39,500 SY
		54	COMMERCIAL APRON, 66,000 SY
		55	MINUTE MAN EAST APRON, 19,500 SY
		56	NORTHSTAR APRON, 73,500 SY
		57	DEICING APRON, 35,000 SY

FUTURE FACILITIES LEGEND	
NO.	DESCRIPTION
100	FUTURE HANGAR
101	FUTURE TERMINAL EXPANSION
102	FUTURE NORTHSTAR OFFICE BUILDING
103	FUTURE RELOCATED FUEL FARM
104	FUTURE GA HANGARS
105	FUTURE HANGAR
106	FUTURE HANGAR
107	FUTURE RENTAL CAR FUEL FACILITY
108	FUTURE QUICK TURNAROUND FACILITY
109	FUTURE ARFF FACILITY
110	FUTURE CHEMICAL STORAGE FACILITY
111	FUTURE AWOS
112	FUTURE ASR
113	FUTURE VOR
114	FUTURE RVR

LAYOUT PLAN LEGEND		
	EXISTING	FUTURE
AIRPORT PROPERTY LINE	---	---
AIRPORT SECURITY FENCE	---	---
ON AIRPORT PROPERTY BUILDINGS	---	---
AIRFIELD PAVEMENT	---	---
AIRFIELD PAVEMENT (TO BE REMOVED)	---	N/A
PAVED ROADS	---	---
RUNWAY PROTECTION ZONE (RPZ)	---	---
BUILDING RESTRICTION LINE (BRL)	---	---
RUNWAY SAFETY AREA (RSA)	---	---
RUNWAY OBJECT FREE AREA (ROFA)	---	---
RUNWAY OBSTACLE FREE ZONE (OFZ)	---	---
TAXIWAY OBJECT FREE AREA (TOFA)	---	---
GLIDE SLOPE CRITICAL AREA	---	N/A
LOCALIZER CRITICAL AREA	---	N/A
PART 77 APPROACH SURFACE	---	---
TERPS/THRESHOLD SITTING SURFACE	---	---
SECTION CORNER	---	N/A
SURVEY MONUMENT	---	N/A
AIRPORT BEACON	---	N/A
LIGHTED WIND CONE & SEGMENTED CIRCLE	---	---
AUTOMATED SURFACE OBSERVATION SYSTEM (ASOS)	---	---
PRECISION APPROACH PATH INDICATOR (PAPI)	---	---
DEVELOPMENT AREAS	---	---
AIRPORT REFERENCE POINT	---	---
RUNWAY END IDENTIFIER LIGHTS (REIL)	---	---
ASR/VOR/AWOS CRITICAL AREA	---	---



VERIFY SCALE AND COLOR!
THIS SHEET MAY BE REDUCED AND IS
INTENDED TO BE IN COLOR. THE BAR
BELOW WILL MEASURE ONE INCH AT
ORIGINAL DESIGN SCALE AND RED,
GREEN, AND BLUE WILL BE VISIBLE IF
REPRODUCED CORRECTLY.

MODIFY SCALE ACCORDINGLY!

REVISIONS			
NO.	DESCRIPTION	BY	DATE



DRAWN BY: KDK
DSGN BY: TSR
APPR BY: SPS
DATE: 01/2026

Q.C. REVIEW
BY: SE
DATE: 10/2025

MISSOULA MONTANA AIRPORT
AIRPORT LAYOUT PLAN
MONTANA

MISSOULA

TERMINAL AREA PLAN

FAA REVIEW
01/2026

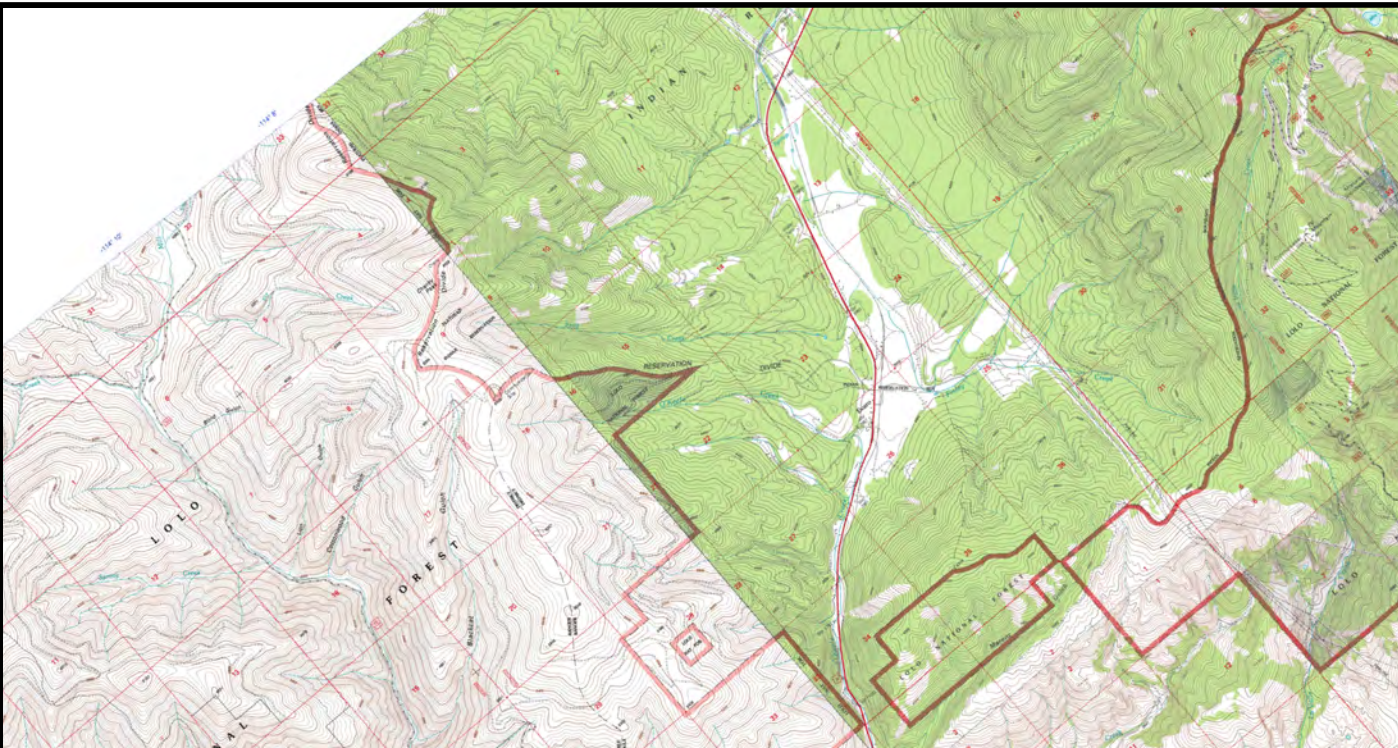
PROJECT NUMBER
3366.038

SHEET NUMBER
4

DRAWING NUMBER
4

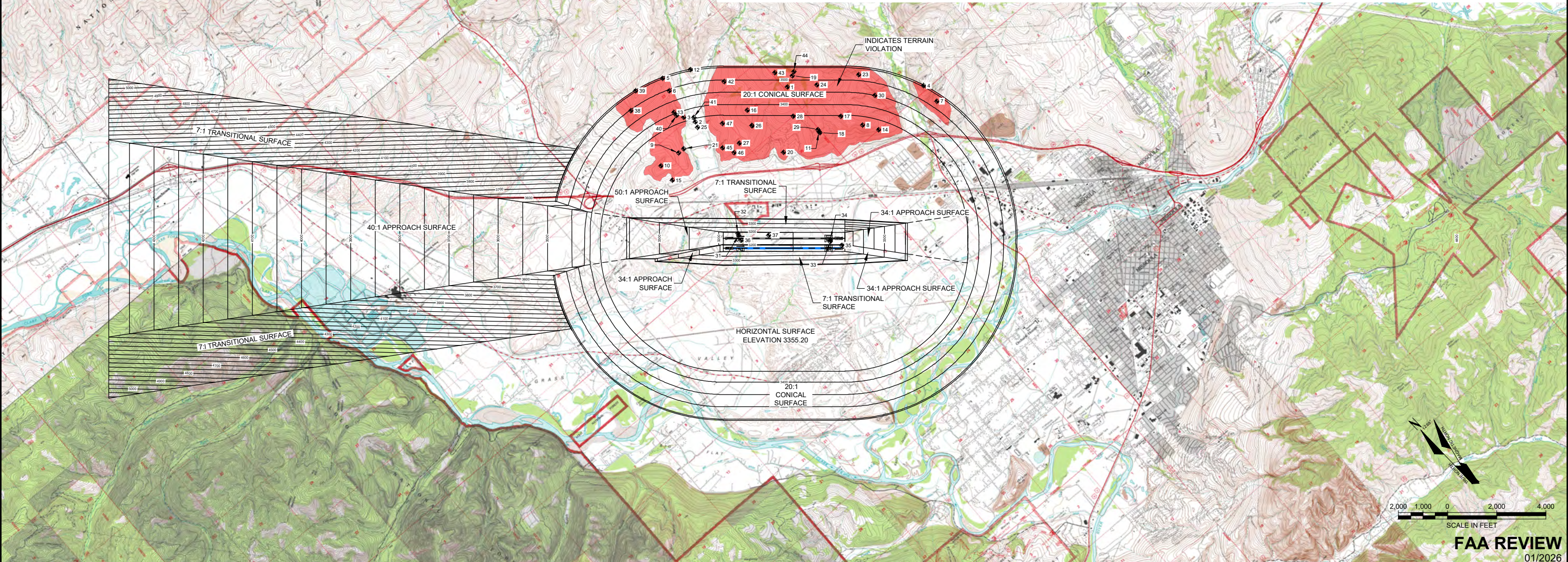
M:\3366\000-MAS\TERVALP\2026\SHEETS\4 - TERMINAL AREA PLAN.DWG

PLOTTED BY: KEVIN KITTLESON ON Jan/16/2026



OBSTRUCTION DATA											
ID	DESCRIPTION	TOP ELEV	PENETRATION	SURFACE NAME	DISPOSITION	ID	DESCRIPTION	TOP ELEV	PENETRATION	SURFACE NAME	DISPOSITION
1	TREE	4228.78	757.17	CONICAL		27	FENCE	3524.06	168.86	HORIZONTAL	
2	TREE	3439.58	84.38	HORIZONTAL		28	FENCE	3614.43	259.23	HORIZONTAL	
3	TREE	3465.60	92.09	CONICAL		29	BUILDING	3748.02	392.82	HORIZONTAL	
4	GROUND	3821.63	267.06	CONICAL	TO REMAIN	30	FENCE	3627.77	178.07	CONICAL	
5	TREE	3699.81	147.98	CONICAL		31	WINDSOCK	3202.36	8.24	PRIMARY	
6	TREE	3569.54	74.90	CONICAL		32	OL ON GLIDESLOPE	3220.69	26.67	PRIMARY	
7	GROUND	3727.00	199.75	CONICAL	TO REMAIN	33	WINDSOCK	3209.88	5.90	PRIMARY	
8	GROUND	3852.55	497.35	HORIZONTAL	TO REMAIN	34	PAPI	3204.20	0.19	PRIMARY	
9	FENCE	3436.46	81.26	HORIZONTAL		35	FENCE	3217.42	12.18	PRIMARY	
10	GROUND	3461.56	106.36	HORIZONTAL	TO REMAIN	36	SIGN	3198.03	3.66	PRIMARY	
11	BUILDING	3767.64	412.44	HORIZONTAL		37	POST	3201.22	3.87	PRIMARY	
12	GROUND	3583.43	28.26	CONICAL	TO REMAIN	38	FENCE	3724.34	227.88	CONICAL	
13	GROUND	3603.47	197.67	CONICAL	TO REMAIN	39	GROUND	3854.57	300.76	CONICAL	TO REMAIN
14	POLE	3699.23	344.03	HORIZONTAL		40	POLE	3604.89	214.44	CONICAL	
15	POLE	3418.85	63.65	HORIZONTAL		41	TREE	3465.34	103.48	CONICAL	
16	GROUND	3879.00	502.01	CONICAL	TO REMAIN	42	GROUND	3645.97	152.76	CONICAL	TO REMAIN
17	GROUND	3875.60	520.40	HORIZONTAL	TO REMAIN	43	TREE	4227.64	697.82	CONICAL	
18	GROUND	3742.84	387.64	HORIZONTAL	TO REMAIN	44	TREE	4376.62	842.62	CONICAL	
19	GROUND	4283.95	767.03	CONICAL	TO REMAIN	45	TREE	3469.39	114.19	HORIZONTAL	
20	GROUND	3467.31	112.11	HORIZONTAL	TO REMAIN	46	BUILDING	3459.95	104.75	HORIZONTAL	
21	TREE	3410.55	55.35	HORIZONTAL		47	TREE	3531.65	176.45	HORIZONTAL	
22	TANK	3770.87	415.67	HORIZONTAL							
23	TANK	3725.25	201.46	CONICAL							
24	GROUND	4102.19	622.15	CONICAL	TO REMAIN						
25	TREE	3391.36	36.16	HORIZONTAL							
26	POLE	3786.57	431.37	HORIZONTAL							

- NOTES
- FUTURE AIRSPACE STUDIES WILL DETERMINE MITIGATION, IF NECESSARY.
 - DATE OF OBSTRUCTION SURVEY IS OCTOBER 2023.
 - RUNWAY 8-26 IS DECOMMISSIONED.



REVISIONS			
NO.	DESCRIPTION	BY	DATE

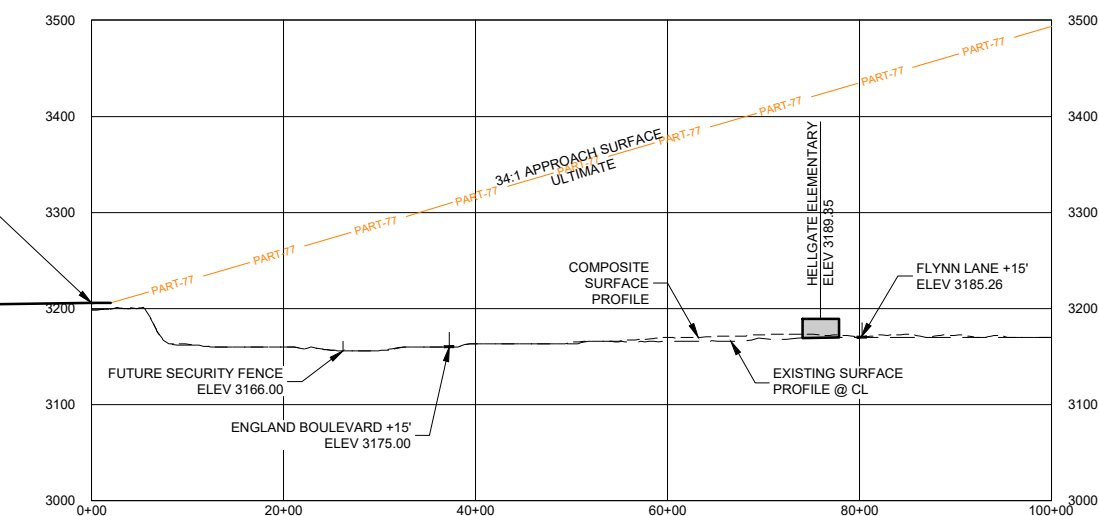
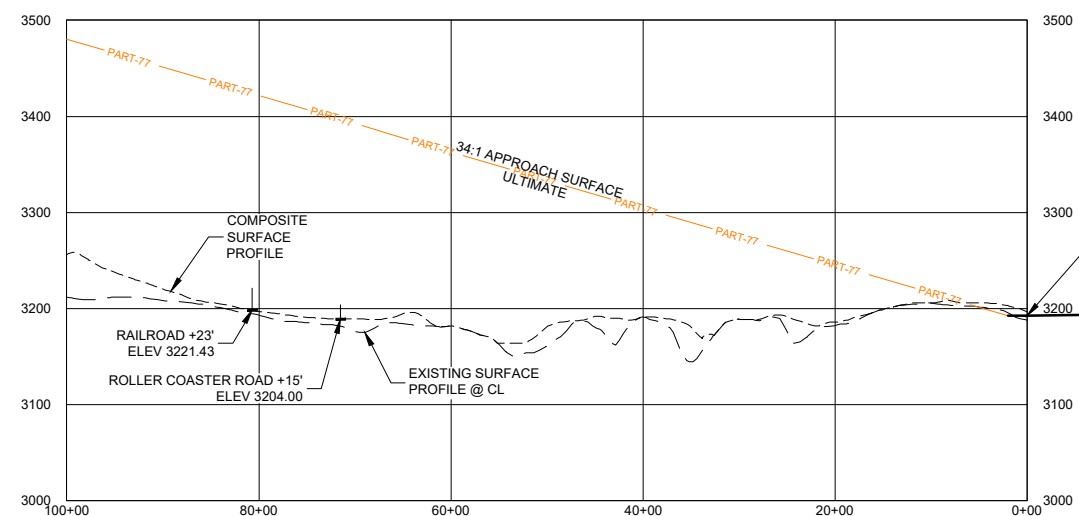
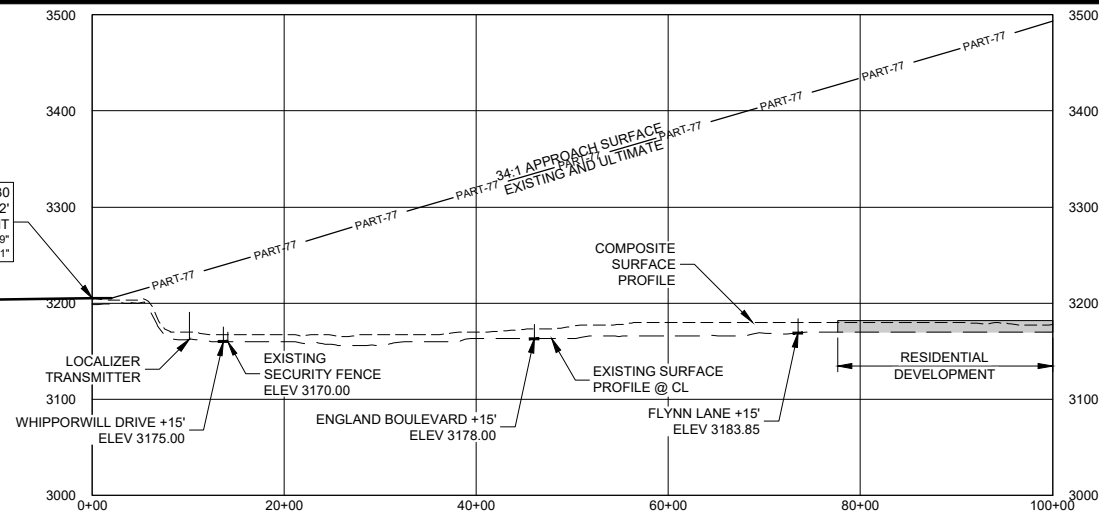
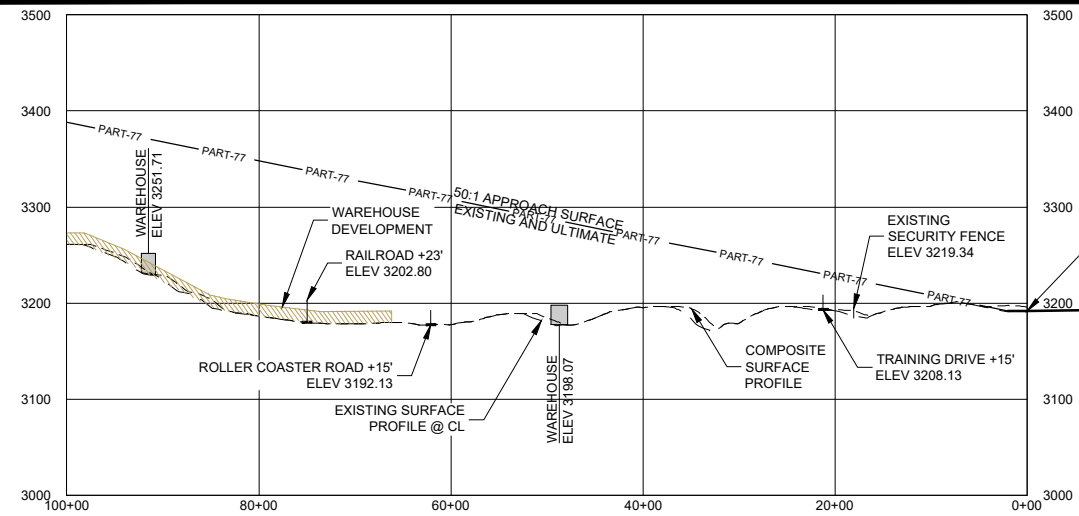
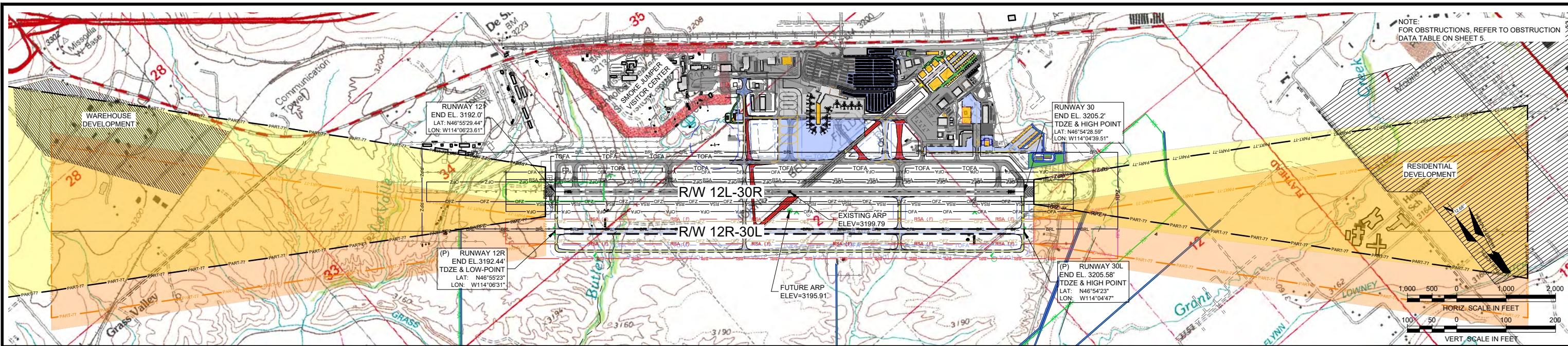


DRAWN BY: KDK
 DSGN BY: TSR
 APPR BY: SPS
 DATE: 01/2026
 Q.C. REVIEW BY: SE
 DATE: 10/2025

MISSOULA MONTANA AIRPORT
 AIRSPACE LAYOUT PLAN
 MISSOULA MONTANA
 AIRSPACE LAYOUT FUTURE PART 77

PROJECT NUMBER 3366.038
 SHEET NUMBER 5
 DRAWING NUMBER 5

M:\3366000-MAS\TERRALP\2024\SHEETS\AIRSPACE LAYOUT FUTURE PART 77.DWG
 PLOTTED BY: KEVIN KITTLESON ON Jan/16/2026



M:\3366\000-MASTER\ALP\2024\SHEETS\6 AIRSPACE DRAWING- RUNWAY 12L-30R AND 12R-30L PROFILE.DWG

VERIFY SCALE AND COLOR!
THIS SHEET MAY BE REDUCED AND IS INTENDED TO BE IN COLOR. THE BAR BELOW WILL MEASURE ONE INCH AT ORIGINAL DESIGN SCALE AND RED, GREEN, AND BLUE WILL BE VISIBLE IF REPRODUCED CORRECTLY.
MODIFY SCALE ACCORDINGLY!

REVISIONS			
NO.	DESCRIPTION	BY	DATE



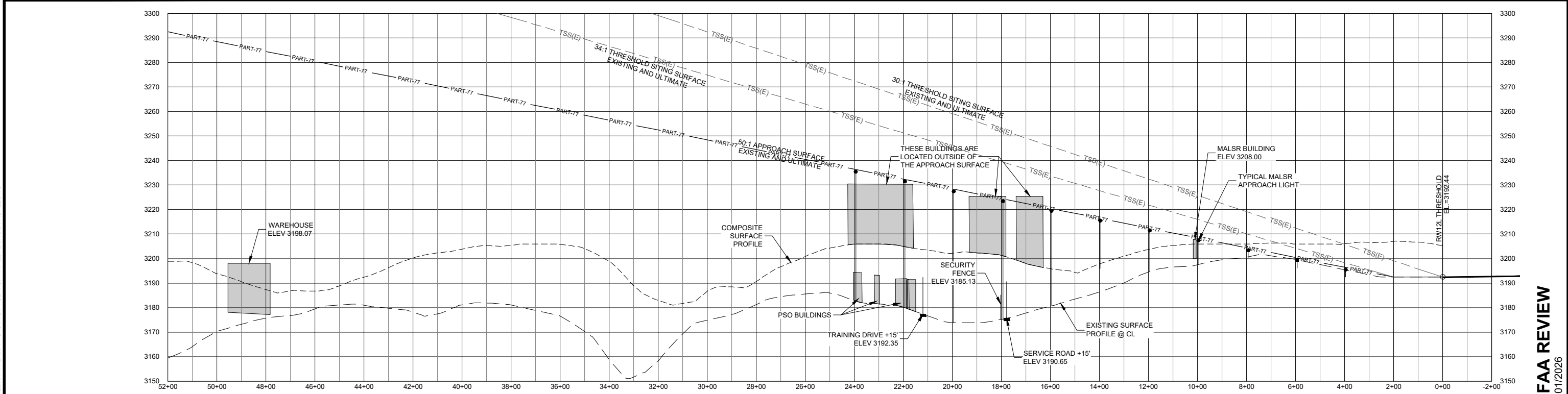
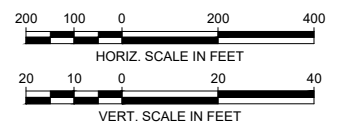
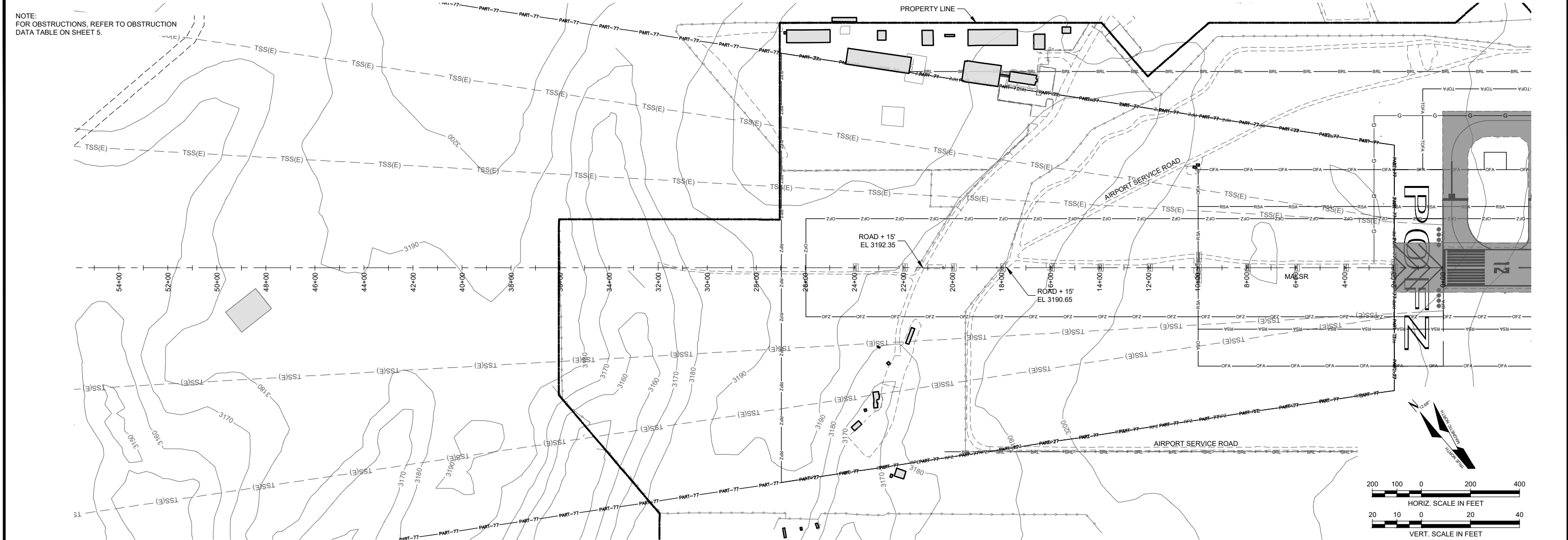
DRAWN BY: KDK
DSGN BY: TSR
APPR BY: SPS
DATE: 01/2026
Q.C. REVIEW BY: SE
DATE: 10/2025

MISSOULA MONTANA AIRPORT AIRPORT LAYOUT PLAN
MISSOULA MONTANA
AIRSPACE DRAWING- RUNWAY 12L-30R AND 12R-30L PROFILE


PROJECT NUMBER 3366.038
SHEET NUMBER 6
DRAWING NUMBER 6

FAA REVIEW 01/2026

PLOTTED BY: KEVIN KITTLESON ON Jan 16/2026



FAA REVIEW
 01/2026

VERIFY SCALE AND COLOR!
 THIS SHEET MAY BE REDUCED AND IS
 INTENDED TO BE IN COLOR. THE BAR
 BELOW WILL MEASURE ONE INCH AT
 ORIGINAL DESIGN SCALE AND RED,
 GREEN, AND BLUE WILL BE VISIBLE IF
 REPRODUCED CORRECTLY.

 MODIFY SCALE ACCORDINGLY!

REVISIONS			
NO.	DESCRIPTION	BY	DATE

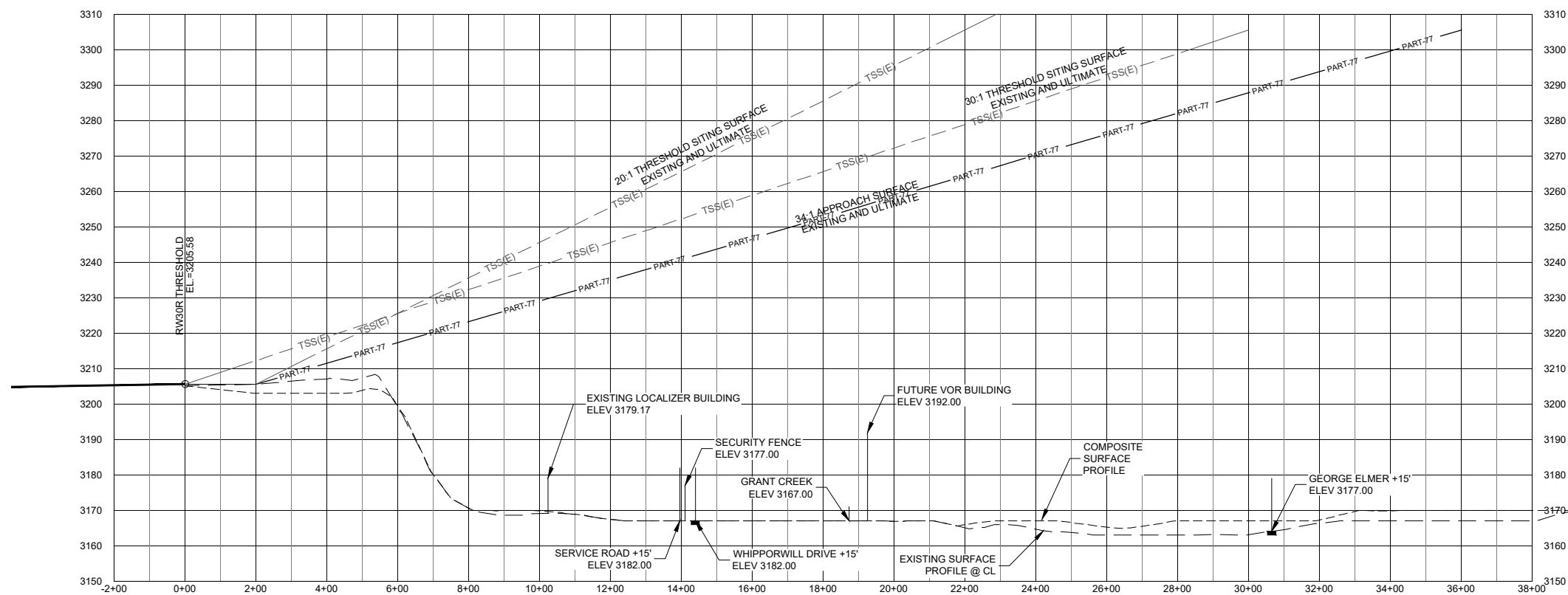
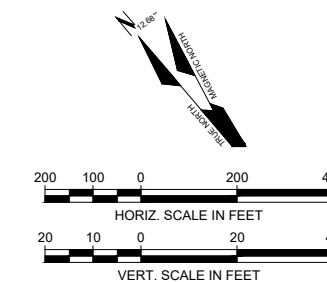
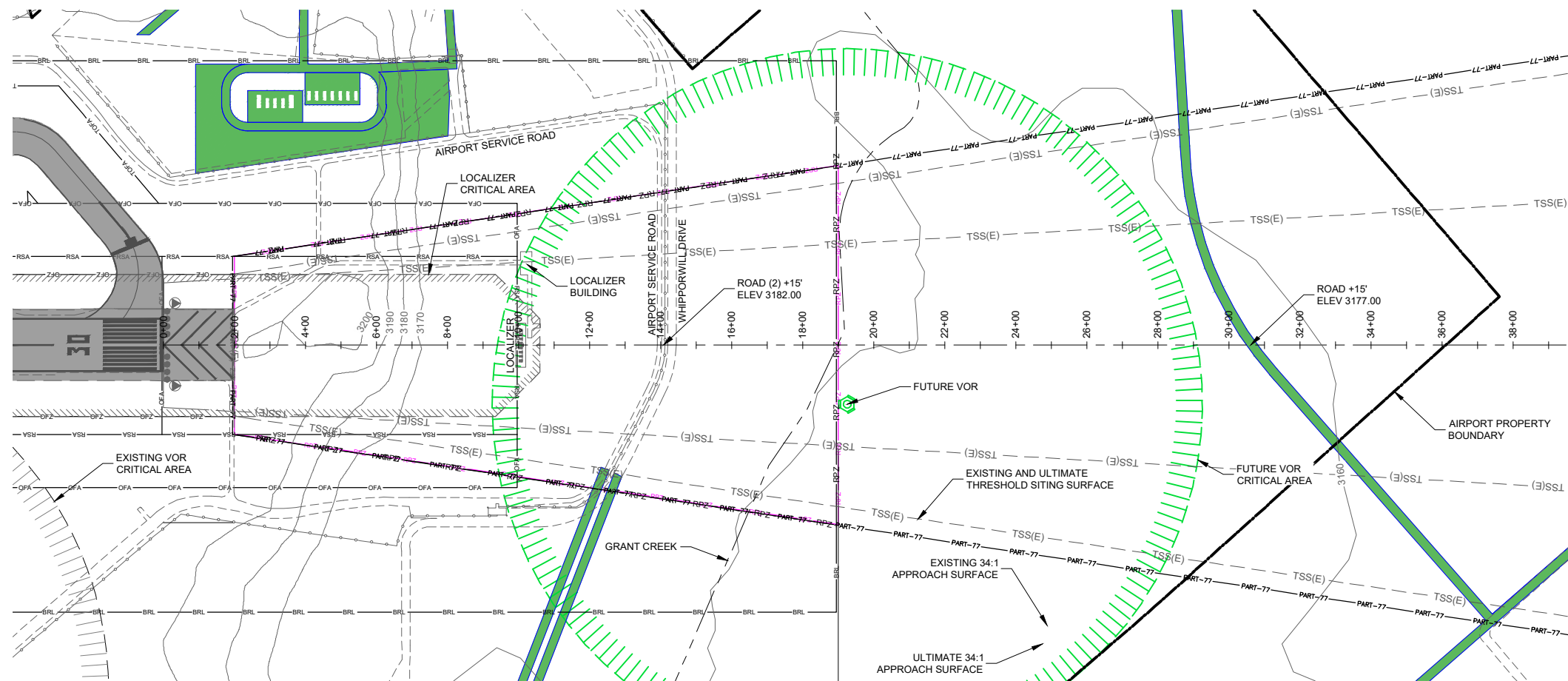


DRAWN BY: KDK
 DSGN BY: TSR
 APPR BY: TSR
 DATE: 01/2026
 Q.C. REVIEW
 BY: SE
 DATE: 10/2025

MISSOULA
 MISSOULA MONTANA AIRPORT
 AIRPORT LAYOUT PLAN
 MONTANA
 INNER APPROACH SURFACE - RUNWAY 12L PLAN AND PROFILE

PROJECT NUMBER
 3366.038
 SHEET NUMBER
 7
 DRAWING NUMBER
7

NOTE:
FOR OBSTRUCTIONS, REFER TO OBSTRUCTION
DATA TABLE ON SHEET 5.



FAA REVIEW
01/2026

VERIFY SCALE AND COLOR!
THIS SHEET MAY BE REDUCED AND IS
INTENDED TO BE IN COLOR. THE BAR
BELOW WILL MEASURE ONE INCH AT
ORIGINAL DESIGN SCALE AND RED,
GREEN, AND BLUE WILL BE VISIBLE IF
REPRODUCED CORRECTLY.

REVISIONS			
NO.	DESCRIPTION	BY	DATE



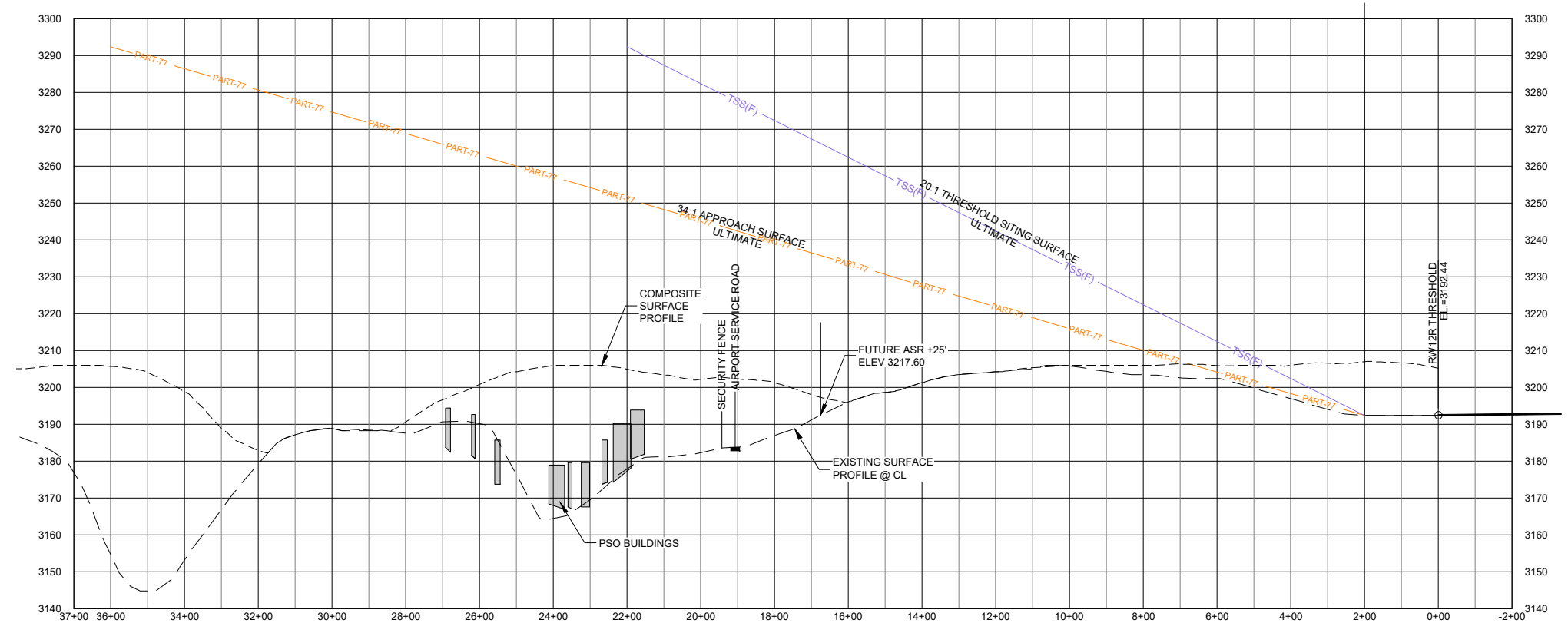
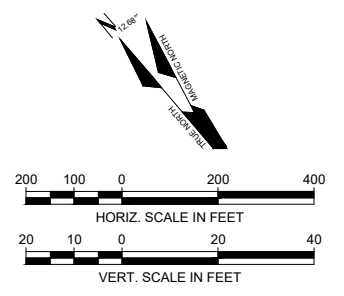
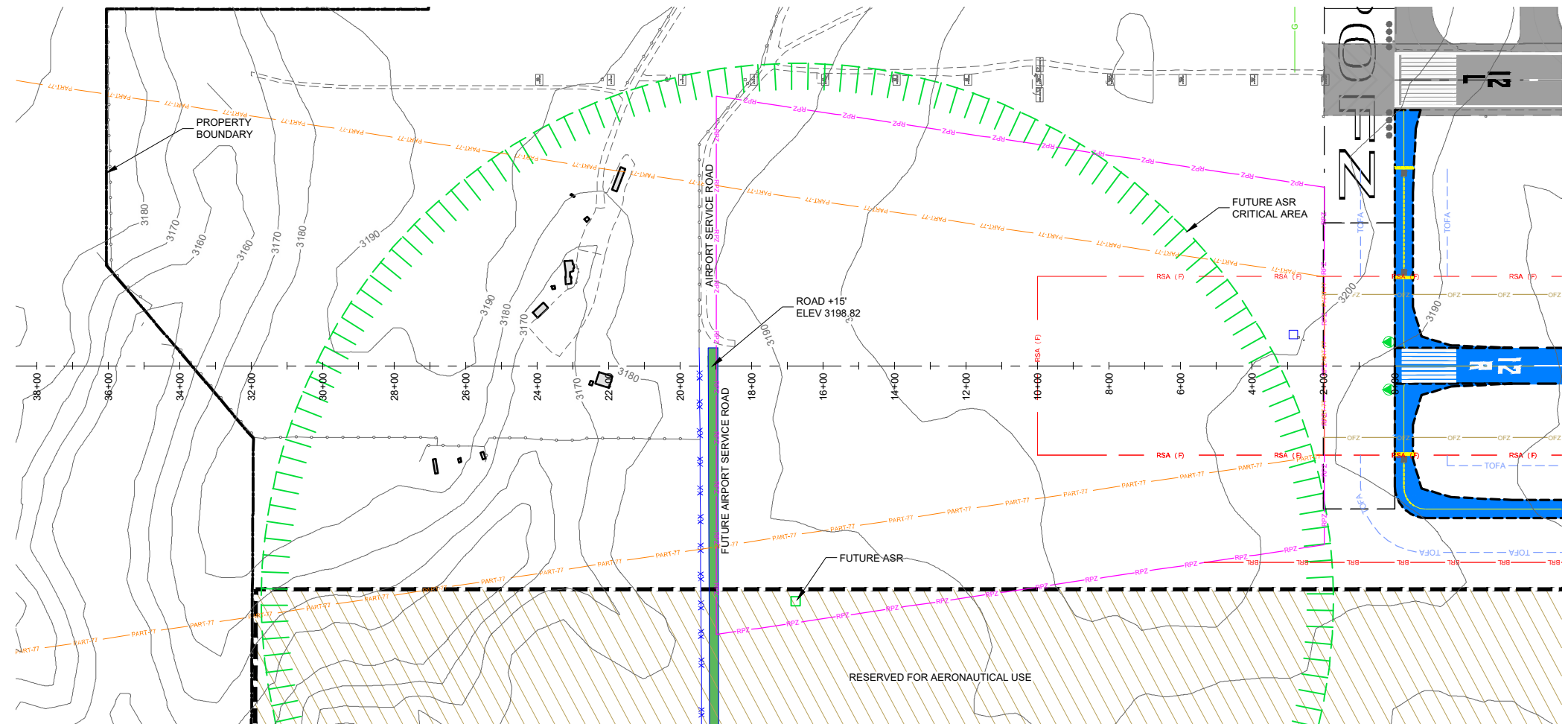
DRAWN BY: KDK
DSGN. BY: TSR
APPR. BY: SPS
DATE: 01/2026

MISSOULA
MISSOULA MONTANA AIRPORT
AIRPORT LAYOUT PLAN
MONTANA
INNER APPROACH SURFACE - RUNWAY 30R PLAN AND PROFILE

PROJECT NUMBER
3366.038
SHEET NUMBER
8
DRAWING NUMBER
8

M:\3366000\MAS\TERVALP\2026\SHEET88 INNER APPROACH SURFACE - RUNWAY 30R PLAN AND PROFILE.DWG
PLOTTED BY: KEVIN KITTLESON ON Jan/16/2026

NOTE:
FOR OBSTRUCTIONS, REFER TO OBSTRUCTION
DATA TABLE ON SHEET 5.



FAA REVIEW
01/2026

M:\3366\000-MASTER\ALP\2024\SHEET89 INNER APPROACH SURFACE - RUNWAY 12R PLAN AND PROFILE.DWG

VERIFY SCALE AND COLOR!
THIS SHEET MAY BE REDUCED AND IS
INTENDED TO BE IN COLOR. THE BAR
BELOW WILL MEASURE ONE INCH AT
ORIGINAL DESIGN SCALE AND RED,
GREEN, AND BLUE WILL BE VISIBLE IF
REPRODUCED CORRECTLY.

MODIFY SCALE ACCORDINGLY!

REVISIONS			
NO.	DESCRIPTION	BY	DATE

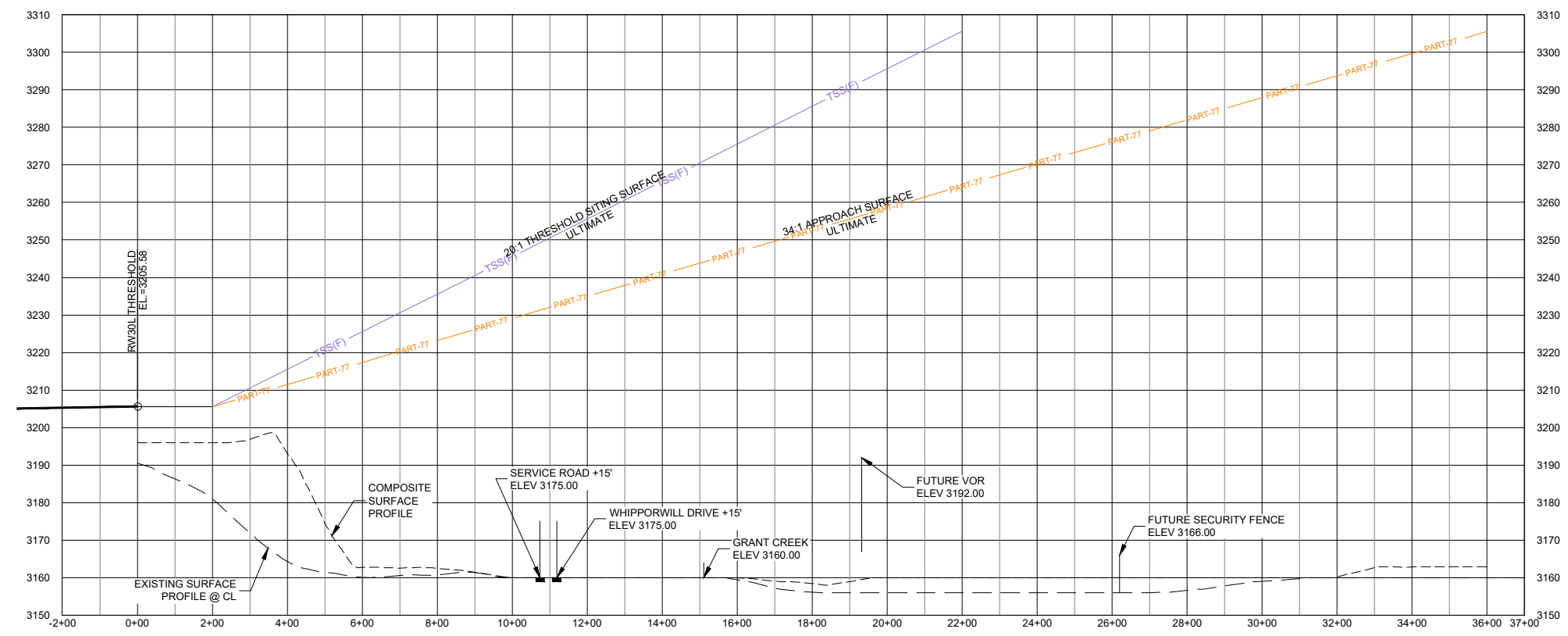
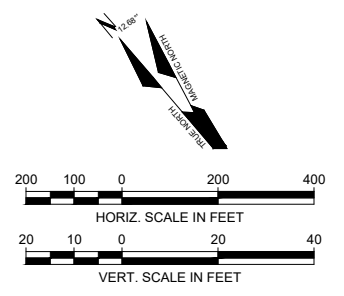
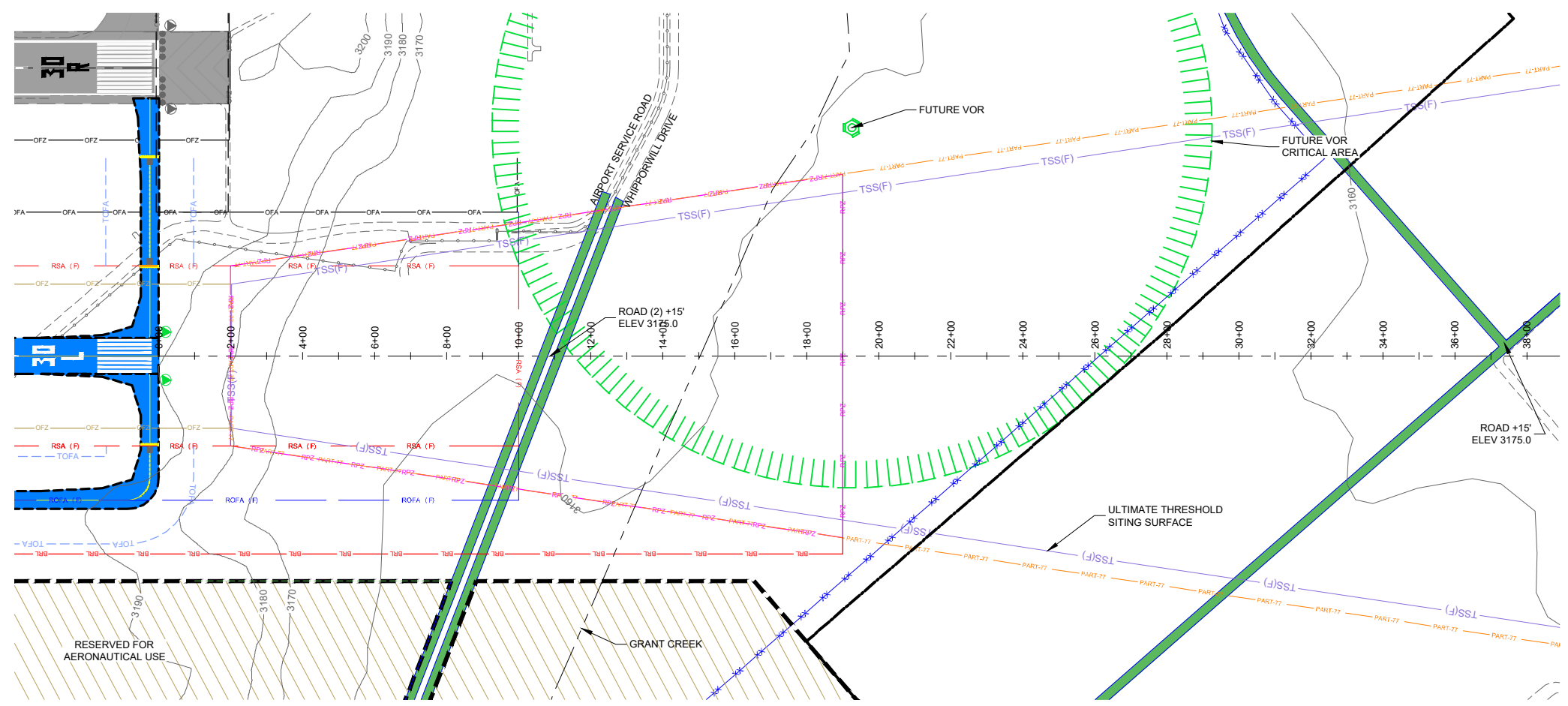


DRAWN BY: KDK
DSGN BY: TSR
APPR BY: SPS
DATE: 01/2026
Q.C. REVIEW BY: SE
DATE: 10/2025

MISSOULA
MISSOULA MONTANA AIRPORT LAYOUT PLAN
INNER APPROACH SURFACE - RUNWAY 12R PLAN AND PROFILE


PROJECT NUMBER 3366.038
SHEET NUMBER 9
DRAWING NUMBER 9

NOTE:
FOR OBSTRUCTIONS, REFER TO OBSTRUCTION
DATA TABLE ON SHEET 5.



FAA REVIEW
01/2026

M:\3366\000-MATERIAL\2026\SHEETS\10 INNER APPROACH SURFACE - RUNWAY 30L PLAN AND PROFILE.DWG
PLOTTED BY: KEVIN KITTLESON ON Jan/16/2026

VERIFY SCALE AND COLOR!
THIS SHEET MAY BE REDUCED AND IS
INTENDED TO BE IN COLOR. THE BAR
BELOW WILL MEASURE ONE INCH AT
ORIGINAL DESIGN SCALE AND RED,
GREEN, AND BLUE WILL BE VISIBLE IF
REPRODUCED CORRECTLY.

MODIFY SCALE ACCORDINGLY!

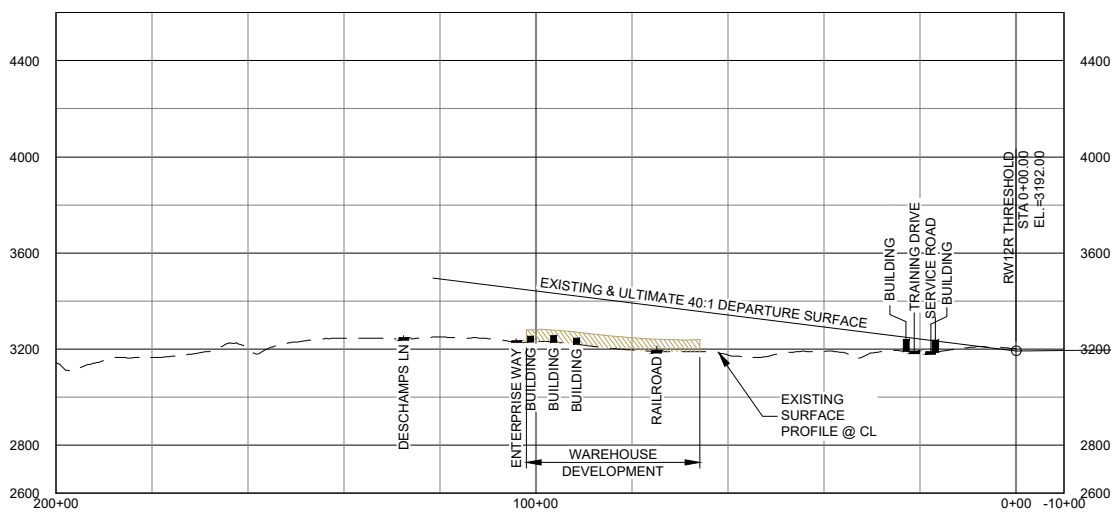
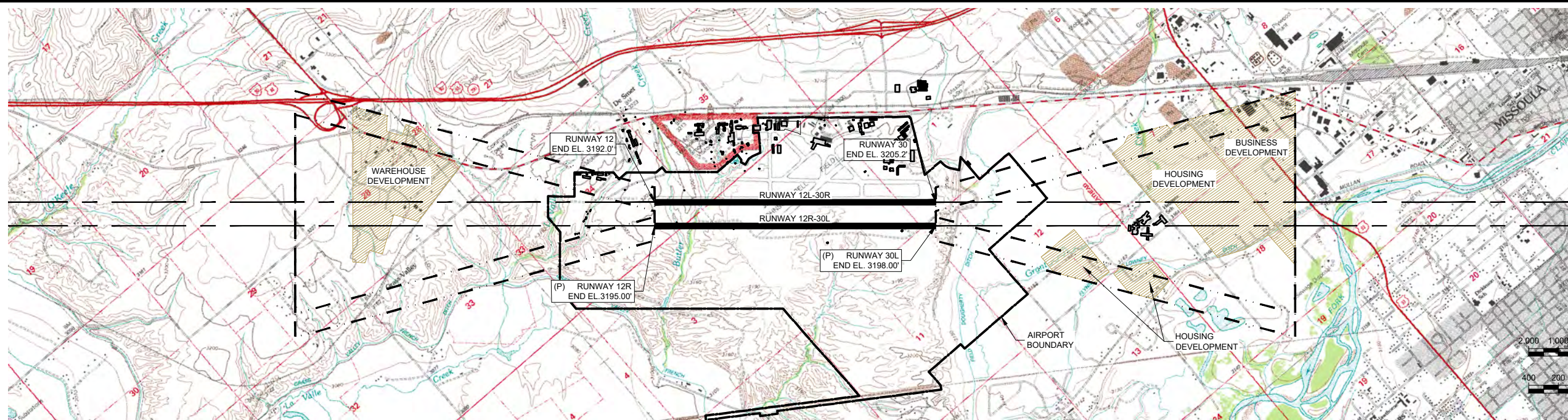
REVISIONS			
NO.	DESCRIPTION	BY	DATE



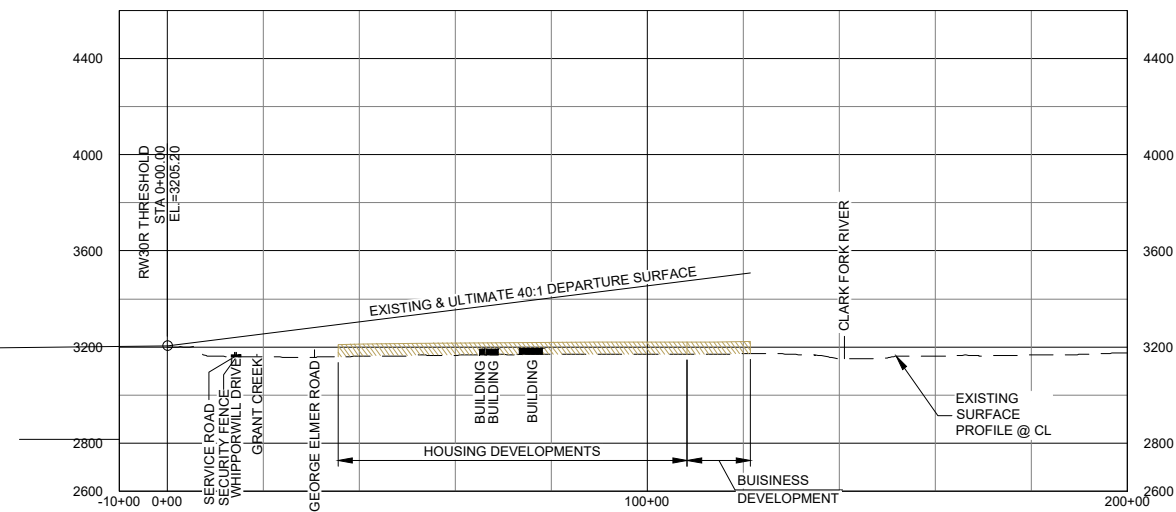
DRAWN BY: KDK
DSGN. BY: TSR
APPR. BY: SPS
DATE: 01/2026
Q.C. REVIEW BY: SE
DATE: 10/2025

MISSOULA MONTANA AIRPORT AIRPORT LAYOUT PLAN
MISSOULA MONTANA
INNER APPROACH SURFACE - RUNWAY 30L PLAN AND PROFILE

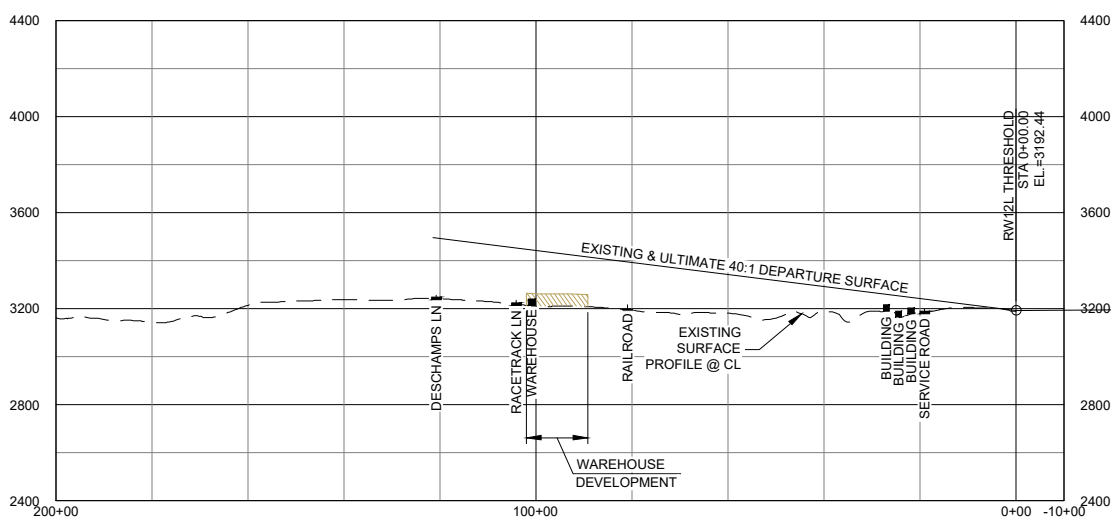
PROJECT NUMBER
3366.038
SHEET NUMBER
10
DRAWING NUMBER
10



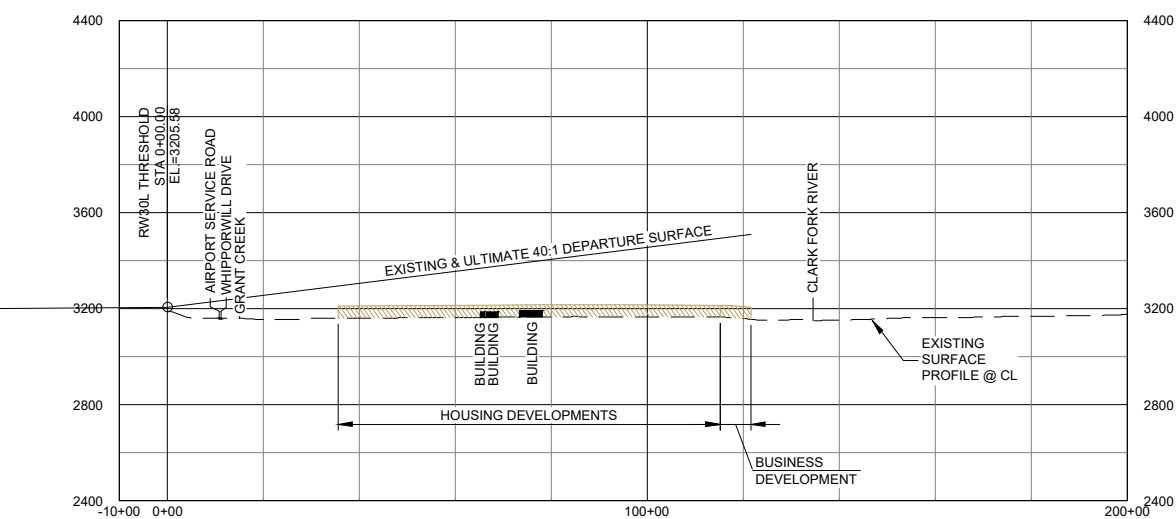
DEPARTURE SURFACE - RUNWAY 12L PROFILE



DEPARTURE SURFACE - RUNWAY 30R PROFILE



DEPARTURE SURFACE - RUNWAY 12R PROFILE



DEPARTURE SURFACE - RUNWAY 30L PROFILE

FAA REVIEW
01/2026

M:\3366\000-MAS\TERVALP\2026\SHEETS\11 DEPARTURE SURFACE RUNWAY 12L-30R PLAN AND PROFILE.DWG

VERIFY SCALE AND COLOR!
THIS SHEET MAY BE REDUCED AND IS
INTENDED TO BE IN COLOR. THE BAR
BELOW WILL MEASURE ONE INCH AT
ORIGINAL DESIGN SCALE AND RED,
GREEN, AND BLUE WILL BE VISIBLE IF
REPRODUCED CORRECTLY.

REVISIONS				
NO.	DESCRIPTION	BY	DATE	

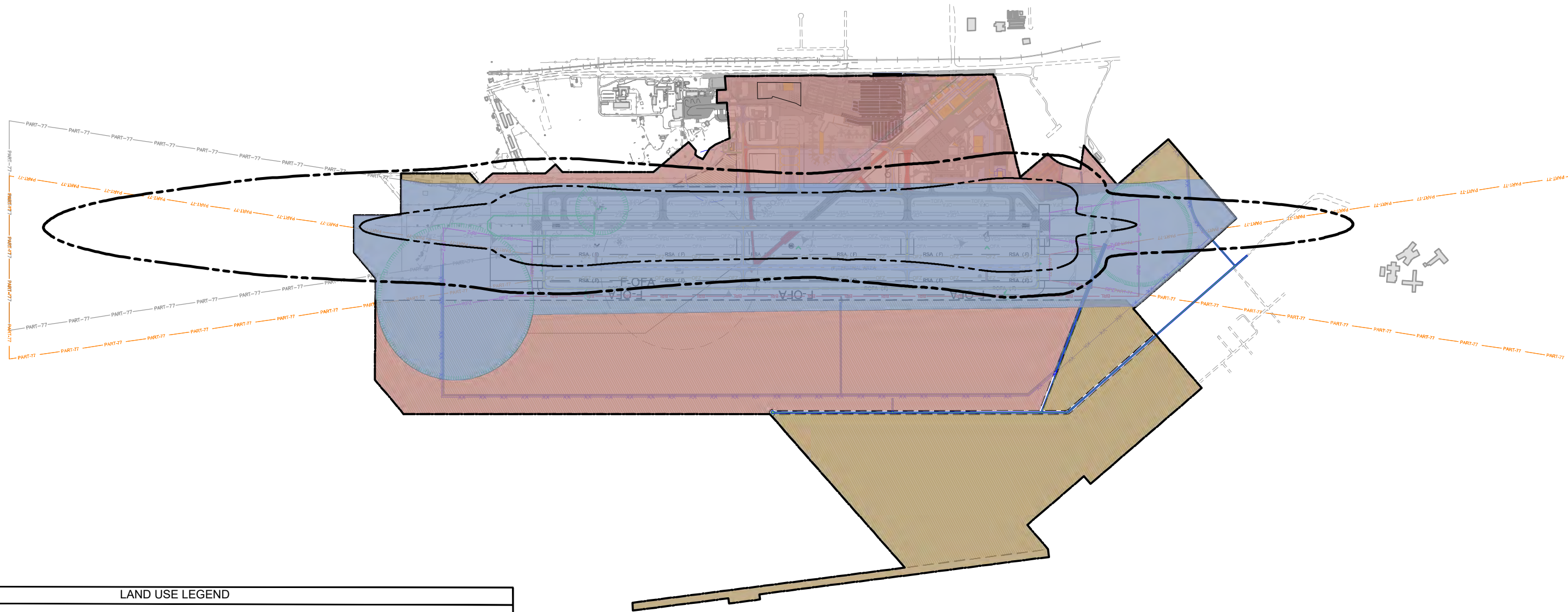


DRAWN BY: KDK
DSGN BY: TSR
APPR BY: SPS
DATE: 01/2026
Q.C. REVIEW
BY: SE
DATE: 10/2025





MISSOULA
MISSOULA MONTANA AIRPORT
AIRPORT LAYOUT PLAN
DEPARTURE SURFACE
RUNWAY 12L-30R PLAN AND PROFILE
RUNWAY 12R-30L PLAN AND PROFILE

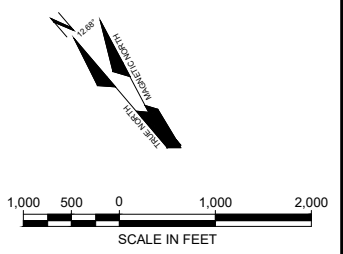
PROJECT NUMBER
3366.038
SHEET NUMBER
11
DRAWING NUMBER
11

PLOTTED BY: KEVIN KITTLESON ON Jan/16/2026




LAND USE LEGEND

- 
65-70-75 DNL Noise Contour
 (NOISE CONTOUR IS CARRIED OVER FROM THE 2005 PART 150 UPDATE FOR THE EXISTING RUNWAY. NEW NOISE CONTOURS WERE NOT GENERATED FOR THE PROPOSED POST PLANNING PERIOD RUNWAY BECAUSE DEMAND DOES NOT EXIST WITHIN THE TIMEFRAME OF THE MASTER PLAN UPDATE.)
- 
RUNWAY, TAXIWAY, INSTRUMENTATION, & APPROACH PROTECTION AREA
- 
AVIATION-USE FACILITIES DEVELOPMENT AREA
- 
AVIATION-USE OR NON-AVIATION-USE FACILITIES DEVELOPMENT AREA



FAA REVIEW
01/2026

M:\3366000-MAS\TERVALP\2026\SHEET\12.LAND USE PLAN.DWG
PLOTTED BY: KEVIN KITTLESON ON Jan 16/2026

VERIFY SCALE AND COLOR!
THIS SHEET MAY BE REDUCED AND IS INTENDED TO BE IN COLOR. THE BAR BELOW WILL MEASURE ONE INCH AT ORIGINAL DESIGN SCALE AND RED, GREEN, AND BLUE WILL BE VISIBLE IF REPRODUCED CORRECTLY.

MODIFY SCALE ACCORDINGLY!

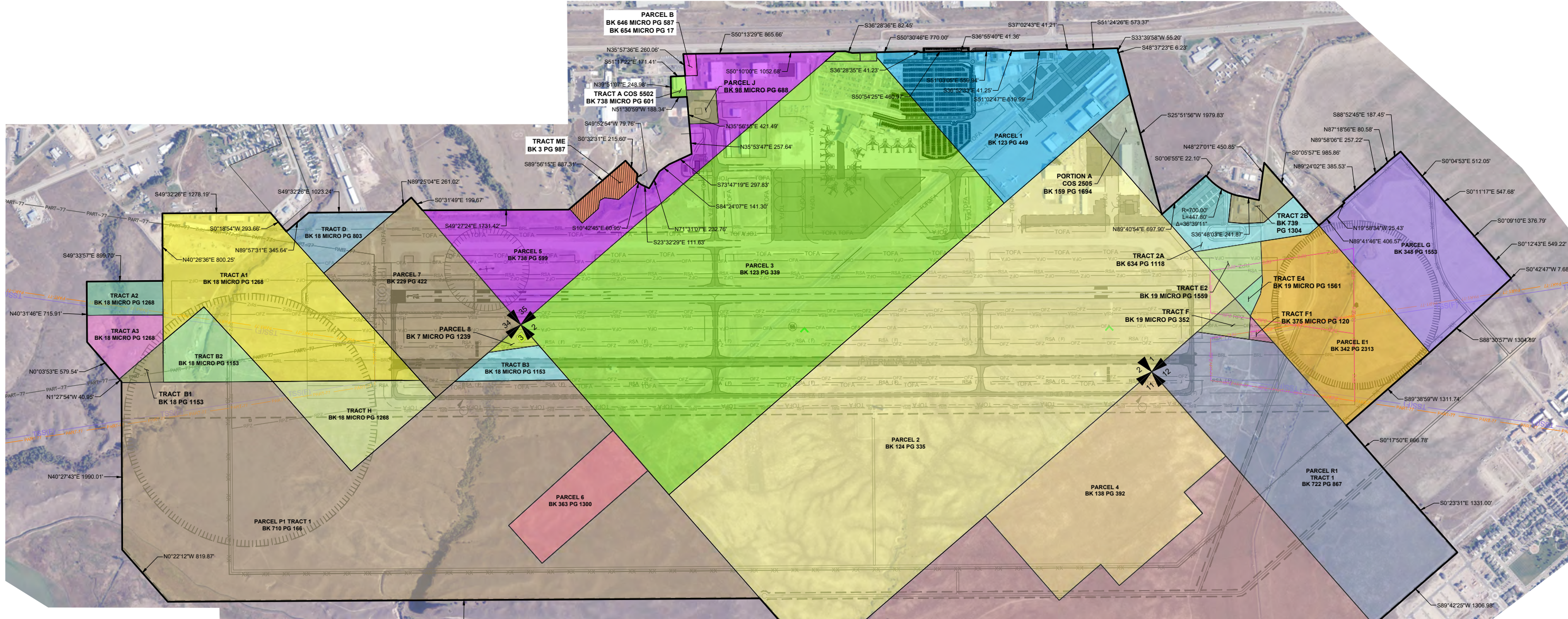
REVISIONS				
NO.	DESCRIPTION	BY	DATE	



DRAWN BY: KDK
 DSGN. BY: TSR
 APPR. BY: SPS
 DATE: 01/2026
 Q.C. REVIEW BY: SE
 DATE: 10/2025

MISSOULA MONTANA AIRPORT
 AIRPORT LAYOUT PLAN
 MISSOULA MONTANA
 LAND USE PLAN

PROJECT NUMBER
3366.038
 SHEET NUMBER
12
 DRAWING NUMBER
12



EXISTING PROPERTY INFORMATION

PARCEL/TRACT #	FAA PROJECT #	ACQUIRED FROM	INTEREST	RECORDING DATA	ACREAGE	DATE
PARCEL "1"	N/A	GLEASON	FEE	BK 123 PG 449	71.9	5/12/37
PARCEL "2"	N/A	MCCULLOUGH	FEE	BK 124 PG 335	409.8	10/18/38
TRACT "2A"	N/A	LEFLER & HALL	FEE	BK 634 PG 1118	17.78	12/04/00
TRACT "2B"	AIP 3-30-0056-37	LEFLER & HALL	FEE	BK 739 PG 1304	5.86	10/31/04
PARCEL "3"	N/A	SHAUGHNESSY	FEE	BK 123 PG 339	323	1/9/40
PARCEL "4"	N/A	DASI	FEE	BK 138 PG 392	90±	12/3/45
PARCEL "5"	N/A	LEHSOU	FEE	BK 126 PG 186	98.359	11/28/39
PARCEL "6"	AIP 3-30-0056-09	DESCHAMPS	FEE	BK 363 PG 1300	22.97	3/7/92
PARCEL "7"	N/A	LEISCHNER	FEE	BK 229 PG 422	60	6/6/63
PARCEL "8"	ADAP 9-24-040-C511	DESCHAMPS	FEE	BK 7 MICRO PG 1239	1.88	5/22/67
TRACT "A1"	ADAP 9-24-040-13	FETSCHER'S INC.	FEE	BK 18 MICRO PG 1268	84.292	7/21/69
TRACT "A2"	ADAP 9-24-040-13	FETSCHER'S INC.	FEE	BK 18 MICRO PG 1268	8.264	7/21/69
TRACT "A3"	ADAP 9-24-040-13	FETSCHER'S INC.	FEE	BK 18 MICRO PG 1268	11.090	7/21/69
TRACT "B1"	ADAP 9-24-040-13	DESCHAMPS	FEE	BK 18 MICRO PG 1153	3.157	7/16/69
TRACT "B2"	ADAP 9-24-040-13	DESCHAMPS	FEE	BK 18 MICRO PG 1153	15.409	7/16/69
TRACT "B3"	ADAP 9-24-040-13	DESCHAMPS	FEE	BK 18 MICRO PG 1153	8.544	7/16/69
TRACT "D"	ADAP 9-24-040-13	LEISCHNER	FEE	BK 18 MICRO PG 803	10.784	6/30/69
TRACT "E1"	AIP 3-30-0056-09	BAUER	FEE	BK 342 MICRO PG 2313	61.214	12/11/91
TRACT "E2"	ADAP 9-24-040-13	FLYNN	FEE	BK 19 MICRO PG 1559	7.221	10/9/69
TRACT "E4"	ADAP 9-24-040-13	FLYNN	FEE	BK 19 MICRO PG 1561	1.590	10/9/69
TRACT "F"	ADAP 9-24-040-13	PRUYN	FEE	BK 19 MICRO PG 352	3.813	8/14/69
TRACT "F1"	ADAP 3-30-0056-09	PRUYN	FEE	BK 375 MICRO PG 120	95	3/3/93
TRACT "G"	AIP 3-30-0056-09	FLYNN	FEE	BK 348 MICRO PG 1553	60±	3/20/92
TRACT "H"	ADAP 9-24-040-13	FETSCHER'S INC.	FEE	BK 18 MICRO PG 1268	27.20±	7/21/69
PARCEL "J"	N/A	U.S. DEPT. OF AGRICULTURE	FEE	BK 98 MICRO PG 688	3.190	12/22/76
PARCEL "P1" TRACT "1"	AIP 3-30-0056-32	DESCHAMPS	FEE	BK 710 PG 166	329.90	6/25/03
PARCEL "P1" TRACT "2"	N/A	DESCHAMPS	FEE	BK 710 PG 167	429.20	6/25/03
PARCEL "R"	N/A	PRUYN	FEE	BK 823 PG 260	375.79	7/18/08
PARCEL "R1"	N/A	PRUYN	FEE	BK 823 PG 259	29.01	7/18/08
PARCEL "R1" TRACT "1"	AIP 3-30-0056-32	PRUYN	FEE	BK 722 PG 867	115.38	
PARCEL "B"	N/A	EASEMENT TO U.S.F.S.	FEE	BK 723 MICRO PG 1669	0.87	11/20/03
TRACT "B1"	N/A	EASEMENT TO U.S.F.S.	FEE	BK 723 MICRO PG 1669	0.56	N/A
TRACT "B2"	N/A	EASEMENT TO U.S.F.S.	FEE	BK 723 MICRO PG 1669	0.56	N/A
TRACT "ME"	N/A	EASEMENT TO U.S.F.S.	FEE	BK 3 PG 987	5±	7/11/66
TRACT "A"	N/A	EASEMENT TO U.S.F.S.	FEE	BK 723 MICRO PG 1669	1.02	N/A
TOTAL					2,700±	



SURVEY NOTES:
BASIS OF BEARING:
HORIZONTAL COORDINATES ARE BASED ON THE MISSOULA COUNTY AIRPORT LOW DISTORTION PROJECTION (LDP). ALL COORDINATES ARE GROUND COORDINATES.
PROJECTION:
TRANSVERSE MERCATOR, NAD 83
CENTRAL LATITUDE: 46°55'27.86732" N
CENTRAL LONGITUDE: 114° 05' 24.64353" W
FALSE NORTING (M): 6096
FALSE EASTING (M): 6096
SCALE FACTOR: 1.00152
VERTICAL DATUM:
ELEVATIONS ARE NAVD88, BASED ON MSOL AND COMPUTED USING GEOID 12A. VERTICAL UNITS ARE US SURVEY FEET.

FAA REVIEW
01/2026

NO.	DESCRIPTION	REVISIONS	BY	DATE



DRAWN BY: KDK
DSGN BY: TSR
APPR BY: SPS
DATE: 01/2026
Q.C. REVIEW BY: SE
DATE: 10/2025

MISSOULA MONTANA AIRPORT AIRPORT LAYOUT PLAN
PROPERTY MAP EXHIBIT A
MISSOULA MONTANA

PROJECT NUMBER: 3366.038
SHEET NUMBER: 13
DRAWING NUMBER: 13

EXISTING PROPERTY INFORMATION						
PARCEL/TRACT #	FAA PROJECT #	ACQUIRED FROM	INTEREST	RECORDING DATA	ACREAGE	DATE
PARCEL "1"	N/A	GLEASON	FEE	BK 123 PG 449	71.9	5/12/37
PARCEL "2"	N/A	SINGER	FEE	BK 124 PG 335	409.8	10/18/38
TRACT "2A"	N/A	LEFLER & HALL	FEE	BK 634 PG 1118	17.78	12/04/00
TRACT "2B"	AIP 3-30-0056-37	LEFLER & HALL	FEE	BK 739 PG 1304	5.95	10/31/04
PARCEL "3"	N/A	SHAUGHNESSY	FEE	BK 123 PG 339	323	1/9/40
PARCEL "4"	N/A	VIOLETTE	FEE	BK 138 PG 392	90±	12/3/45
PARCEL "5"	N/A	LEHSOU	FEE	BK 126 PG 186	98.359	11/28/39
PARCEL "6"	AIP 3-30-0056-09	DESCHAMPS	FEE	BK 363 PG 1300	22.97	3/7/92
PARCEL "7"	N/A	LEISCHNER	FEE	BK 229 PG 422	60	6/6/63
PARCEL "8"	ADAP 9-24-040-C511	DESCHAMPS	FEE	BK 7 MICRO PG 1239	1.88	5/22/67
TRACT "A1"	ADAP 9-24-040-13	FETSCHER'S INC.	FEE	BK 18 MICRO PG 1268	84.292	7/21/69
TRACT "A2"	ADAP 9-24-040-13	FETSCHER'S INC.	FEE	BK 18 MICRO PG 1268	8.264	7/21/69
TRACT "A3"	ADAP 9-24-040-13	FETSCHER'S INC.	FEE	BK 18 MICRO PG 1268	11.090	7/21/69
TRACT "B1"	ADAP 9-24-040-13	DESCHAMPS	FEE	BK 18 MICRO PG 1153	3.157	7/16/69
TRACT "B2"	ADAP 9-24-040-13	DESCHAMPS	FEE	BK 18 MICRO PG 1153	15.409	7/16/69
TRACT "B3"	ADAP 9-24-040-13	DESCHAMPS	FEE	BK 18 MICRO PG 1153	8.544	7/16/69
TRACT "D"	ADAP 9-24-040-13	LEISCHNER	FEE	BK 18 MICRO PG 803	10.784	6/30/69
TRACT "E1"	AIP 3-30-0056-09	BAUER	FEE	BK 342 MICRO PG 2313	61.214	12/11/91
TRACT "E2"	ADAP 9-24-040-13	FLYNN	FEE	BK 19 MICRO PG 1559	7.221	10/9/69
TRACT "E4"	ADAP 9-24-040-13	FLYNN	FEE	BK 19 MICRO PG 1561	1.590	10/9/69
TRACT "F"	ADAP 9-24-040-13	PRUYN	FEE	BK 19 MICRO PG 352	3.813	8/14/69
TRACT "F1"	ADAP 3-30-0056-09	PRUYN	FEE	BK 375 MICRO PG 120	.95	3/3/93
TRACT "G"	AIP 3-30-0056-09	FLYNN	FEE	BK 348 MICRO PG 1553	60±	3/20/92
TRACT "H"	ADAP 9-24-040-13	FETSCHER'S INC.	FEE	BK 18 MICRO PG 1268	27.20	7/21/69
PARCEL "J"	N/A	U.S. DEPT. OF AGRICULTURE	FEE	BK 98 MICRO PG 688	3.190	12/22/76
PARCEL "P1" TRACT "1"	AIP 3-30-0056-32	DESCHAMPS	FEE	BK 710 PG 166	329.80	6/25/03
PORTION "A"	N/A	MADSEN	FEE	BK 159 MICRO PG 1694	9.84	12/24/80
PARCEL "R"	N/A	PRUYN	FEE	BK 823 PG 260	375.79	7/18/08
PARCEL "R"	N/A	PRUYN	FEE	BK 823 PG 259	29.01	7/18/08
PARCEL "R1" TRACT "1"	AIP 3-30-0056-32	PRUYN	FEE	BK 722 PG 867	115.38	11/20/03
PARCEL "B"	N/A	EASEMENT TO U.S.F.S.	EASEMENT	BK 646 MICRO PG 587	0.87	4/6/01
EASEMENT "AE"	N/A	MONTANA DEPT. OF HWY.	EASEMENT	BK 233 MICRO PG 1958	1.02	1/9/86
EASEMENT "BE"	N/A	BURLINGTON NORTHERN R.R.	EASEMENT	BK 254 MICRO PG 2030	1.93	2/10/87
TRACT "ME"	N/A	EASEMENT TO U.S.F.S.	EASEMENT	BK 3 PG 987	5±	7/11/66
TRACT "S"	N/A	U.S.F.S.	FEE	BK 738 MICRO PG 601	1.03	8/6/04
TOTAL					2,228±	

PERIMETER LEGAL DESCRIPTION

THAT PORTION OF LAND LOCATED IN SECTIONS 1, 2, 3, 11, AND 12, TOWNSHIP 13 NORTH, RANGE 20 WEST, AND SECTIONS 34, AND 35, TOWNSHIP 14 NORTH, RANGE 20 WEST, PRINCIPAL MERIDIAN, MONTANA, MISSOULA COUNTY, MONTANA, BEING MORE PARTICULARLY DESCRIBED AS FOLLOWS:

BEGINNING AT THE SECTION CORNER COMMON TO SECTIONS 2, 3, 10, AND 11, TOWNSHIP 13 NORTH, RANGE 20 WEST SAID POINT BEING MONUMENTED WITH A 2.5 INCH DIAMETER BRASS CAP MARKED "9747LS" AND THE TRUE POINT OF BEGINNING; THENCE ALONG THE WESTERLY BOUNDARY OF SAID SECTION 2 N 00° 29' 46" W A DISTANCE OF 1011.62 FEET TO A 1.25 INCH YELLOW PLATIC CAP MARKED "9747LS"; THENCE N 49° 32' 07" W A DISTANCE OF 7009.64 FEET TO A 1.25 INCH YELLOW PLATIC CAP MARKED "9747LS SAID POINT BEING ON THE WESTERLY LINE OF SECTION 34, TOWNSHIP 14 NORTH, RANGE 20 WEST; THENCE ALONG SAID WESTERLY LINE OF SECTION 34 N 00° 27' 43" 22' 12" W A DISTANCE OF 819.87 FEET TO A 1.25 INCH YELLOW PLATIC CAP MARKED "9747LS"; THENCE N 40° 27' 43" E A DISTANCE OF 1990.01 FEET TO A 1.25 INCH YELLOW PLATIC CAP MARKED "9747LS"; THENCE N 01° 27' 54" W A DISTANCE OF 40.95 FEET TO A 2 INCH IRON PIPE; THENCE N 00° 03' 53" E A DISTANCE OF 579.54 FEET TO A 2 INCH ALUMINUM CAP MARKED "3325S"; THENCE N 40° 31' 46" E A DISTANCE OF 715.91 FEET TO A 1.5 INCH ALUMINUM CAP MARKED "3325S"; THENCE S 49° 33' 57" E A DISTANCE OF 899.70 FEET TO A 1.5 INCH ALUMINUM CAP MARKED "3325S"; THENCE N 40° 26' 36" E A DISTANCE OF 800.25 FEET TO A 1.25 INCH YELLOW PLATIC CAP MARKED "12673LS"; THENCE S 49° 32' 26" E A DISTANCE OF 1278.19 FEET TO A 5/8 INCH REBAR; THENCE S 00° 18' 54" W FOR A DISTANCE OF 293.66 FEET TO THE SOUTH LINE OF THE NORTHEAST ONE-QUARTER OF SECTION 34, TOWNSHIP 14 NORTH, RANGE 20 WEST; THENCE ALONG SAID SOUTH LINE OF THE NORTHEAST ONE-QUARTER OF SECTION 34 N 89° 57' 31" E A DISTANCE OF 345.64 FEET; THENCE S 49° 32' 26" E A DISTANCE OF 1023.24 FEET; THENCE N 89° 25' 04" E A DISTANCE OF 261.02 FEET TO A 2.5 INCH BRASS CAP MARKED "2062S"; THENCE S 00° 31' 49" E A DISTANCE OF 199.67 FEET TO A 2.5 INCH BRASS CAP; THENCE S 49° 27' 24" E A DISTANCE OF 1731.42 FEET TO A 2.5 INCH BRASS CAP; THENCE S 89° 56' 15" E A DISTANCE OF 887.31 FEET; THENCE S 00° 32' 31" E A DISTANCE OF 215.60 FEET TO A 2.5 ALUMINUM CAP MARKED "8376S"; THENCE S 49° 52' 54" W A DISTANCE OF 79.76 FEET TO A 2.5 ALUMINUM CAP MARKED "8376S"; THENCE S 10° 42' 45" E A DISTANCE OF 60.95 FEET TO A 2.5 ALUMINUM CAP MARKED "8376S"; THENCE S 23° 32' 29" E A DISTANCE OF 111.63 FEET TO A 2.5 ALUMINUM CAP MARKED "8376S"; THENCE N 71° 31' 07" E A DISTANCE OF 232.76 FEET TO A 2.5 ALUMINUM CAP MARKED "8376S"; THENCE S 84° 24' 07" E A DISTANCE OF 141.30 FEET TO A 2.5 ALUMINUM CAP MARKED "8376S"; THENCE S 73° 47' 19" E A DISTANCE OF 297.83 FEET TO A 5/8 INCH REBAR; THENCE N 35° 53' 47" E A DISTANCE OF 287.64 FEET; THENCE N 35° 56' 15" E A DISTANCE OF 421.49 FEET; THENCE N 51° 30' 59" W A DISTANCE OF 188.34 FEET; THENCE N 39° 51' 07" E A DISTANCE OF 248.98 FEET TO A 2.5 ALUMINUM CAP MARKED "8376S"; THENCE S 51° 17' 22" E A DISTANCE OF 171.41 FEET; THENCE N 35° 57' 36" E A DISTANCE OF 260.06 FEET TO THE SOUTHWESTERLY RIGHT OF WAY OF WEST BROADWAY (U.S. HWY 10); THENCE ALONG SAID RIGHT OF WAY S 50° 13' 29" E A DISTANCE OF 865.66 FEET TO A 2 INCH ALUMINUM CAP; THENCE ALONG SAID RIGHT OF WAY S 50° 10' 00" E A DISTANCE OF 1052.68 FEET TO A 2 INCH ALUMINUM CAP; THENCE ALONG SAID RIGHT OF WAY S 36° 28' 36" E A DISTANCE OF 82.45 FEET; THENCE ALONG SAID RIGHT OF WAY S 50° 30' 46" E A DISTANCE OF 700.00 FEET; THENCE ALONG SAID RIGHT OF WAY S 36° 28' 35" E A DISTANCE OF 41.23 FEET; THENCE ALONG SAID RIGHT OF WAY S 50° 54' 25" E FOR A DISTANCE OF 460.97 FEET TO A 2 INCH ALUMINUM CAP MARKED "14742LS"; THENCE ALONG SAID RIGHT OF WAY S 36° 55' 40" E A DISTANCE OF 41.36 FEET TO A 2 INCH ALUMINUM CAP MARKED "14742LS"; THENCE ALONG SAID RIGHT OF WAY S 51° 03' 05" E FOR A DISTANCE OF 559.94 FEET TO A 2 INCH ALUMINUM CAP MARKED "14742LS"; THENCE ALONG SAID RIGHT OF WAY S 36° 52' 33" E A DISTANCE OF 41.25 FEET TO A 2 INCH ALUMINUM CAP MARKED "14742LS"; THENCE ALONG SAID RIGHT OF WAY S 51° 02' 47" E A DISTANCE OF 619.99 FEET TO A 2 INCH ALUMINUM CAP MARKED "14742LS"; THENCE ALONG SAID RIGHT OF WAY S 37° 02' 43" E A DISTANCE OF 41.21 FEET TO A 2 INCH ALUMINUM CAP MARKED "14742LS"; THENCE S 51° 24' 26" E A DISTANCE OF 573.37 FEET TO A 2 INCH ALUMINUM CAP MARKED "14742LS"; THENCE ALONG SAID RIGHT OF WAY S 33° 39' 58" W A DISTANCE OF 55.20 FEET; THENCE ALONG SAID RIGHT OF WAY S 48° 37' 23" E A DISTANCE OF 6.23 FEET TO A 2 INCH ALUMINUM CAP MARKED "14388S"; THENCE LEAVING SAID RIGHT OF WAY S 25° 51' 56" W A DISTANCE OF 1979.83 FEET; THENCE N 89° 40' 41" E A DISTANCE OF 697.90 FEET; THENCE S 00° 06' 55" E A DISTANCE OF 22.10 FEET; THENCE ALONG A CURVE CONCAVE TO THE EAST 447.80 FEET, HAVING A RADIUS OF 700.00 FEET, AN INTERIOR ANGLE OF 36° 39' 11", AND A CHORD BEARING S 18° 26' 03" E A DISTANCE OF 440.20 FEET; THENCE S 36° 48' 03" E A DISTANCE OF 241.87 FEET TO A DAMAGED 1.25 INCH YELLOW PLASTIC CAP; THENCE N 48° 27' 01" E A DISTANCE OF 450.85 FEET TO A 5/8 INCH REBAR; THENCE S 00° 05' 57" E A DISTANCE OF 985.86 FEET TO A 2 INCH ALUMINUM CAP MARKED "4468S" SAID POINT BEING THE ONE-QUARTER CORNER OF SECTIONS 1 AND 12, TOWNSHIP 13 NORTH, RANGE 20 WEST; THENCE N 89° 41' 46" E A DISTANCE OF 406.57 FEET TO A 5/8 INCH REBAR; THENCE N 19° 58' 34" W A DISTANCE OF 25.43 FEET TO A 1.25 INCH ILLEGIBLE YELLOW PLASTIC CAP; THENCE N 89° 24' 02" E FOR A DISTANCE OF 385.53 FEET TO A 5/8 INCH REBAR; THENCE N 89° 58' 06" E A DISTANCE OF 257.22 FEET TO A 5/8 INCH REBAR; THENCE N 87° 18' 56" E A DISTANCE OF 80.58 FEET TO A 5/8 INCH REBAR; THENCE S 88° 52' 45" E A DISTANCE OF 187.45 FEET TO A 4 INCH STEEL PIPE; THENCE S 00° 04' 53" E A DISTANCE OF 512.05 FEET; THENCE S 00° 11' 17" E A DISTANCE OF 547.68 FEET; THENCE S 00° 09' 10" E A DISTANCE OF 376.79 FEET; THENCE S 00° 12' 43" E A DISTANCE OF 549.22 FEET; THENCE S 00° 42' 47" W A DISTANCE OF 7.68 FEET TO A 5/8 INCH REBAR; THENCE S 88° 30' 57" W A DISTANCE OF 1304.88 FEET TO A 1.25 INCH DAMAGED YELLOW PLASTIC CAP; THENCE S 89° 38' 59" W A DISTANCE OF 1311.74 FEET; THENCE S 00° 17' 50" E A DISTANCE OF 666.78 FEET TO A 1.25 INCH YELLOW PLASTIC CAP MARKED "3713S"; THENCE S 00° 23' 31" E A DISTANCE OF 1331.00 FEET TO A 1.25 INCH YELLOW PLASTIC CAP MARKED "3713S"; THENCE S 89° 42' 25" W A DISTANCE OF 1306.98 FEET TO A YELLOW PLASTIC CAP MARKED "9747S"; THENCE S 89° 44' 37" W A DISTANCE OF 1501.58 FEET TO YELLOW PLASTIC CAP MARKED "3713S"; THENCE N 00° 14' 43" W A DISTANCE OF 195.01 FEET TO A 2 INCH ALUMINUM CAP MARKED 14388S; THENCE S 89° 44' 01" W A DISTANCE OF 1426.92 FEET TO A 2 INCH ALUMINUM CAP MARKED 14388S; THENCE S 00° 12' 01" E A DISTANCE OF 610.31 FEET TO A 2 INCH ALUMINUM CAP MARKED "9007S"; THENCE S 33° 10' 17" W A DISTANCE OF 150.03 FEET TO A 2 INCH ALUMINUM CAP MARKED "9007S"; THENCE N 56° 52' 32" W A DISTANCE OF 2670.47 FEET TO A ILLEGIBLE YELLOW PLASTIC CAP; THENCE N 56° 52' 08" W A DISTANCE OF 2913.76 FEET TO A YELLOW PLASTIC CAP MARKED "14519LS"; THENCE S 33° 03' 33" W A DISTANCE OF 100.03 FEET TO A YELLOW PLASTIC CAP MARKED "14519LS"; THENCE N 56° 52' 23" W A DISTANCE OF 600.14 FEET TO A YELLOW PLASTIC CAP MARKED "14519LS"; THENCE N 33° 06' 38" E A DISTANCE OF 99.76 FEET TO A YELLOW PLASTIC CAP MARKED "14519LS"; THENCE N 56° 51' 42" W A DISTANCE OF 1840.17 FEET TO A 1.5 INCH ALUMINUM CAP MARKED "3325S"; THENCE N 37° 02' 56" E A DISTANCE OF 150.28 FEET; THENCE S 56° 52' 17" E A DISTANCE OF 5246.28 FEET TO A YELLOW PLASTIC CAP MARKED "9747LS"; THENCE N 00° 04' 50" E A DISTANCE OF 245.72 FEET TO A 3 INCH ALUMINUM CAP MARKED "3713S", SAID POINT BEING THE ONE-QUARTER CORNER OF SECTIONS 10 AND 11, TOWNSHIP 13 NORTH, RANGE 20 WEST; THENCE ALONG THE WEST LINE OF SAID SECTION 11, N 00° 58' 08" W A DISTANCE OF 2690.45 FEET TO A 2.5 INCH DIAMETER BRASS CAP MARKED "9747LS", SAID POINT BEING THE SECTION CORNER OF SECTIONS 2, 3, 10, AND 11, TOWNSHIP 13 NORTH, RANGE 20 WEST AND THE TRUE POINT OF BEGINNING.

AREA CONTAINING 2,228 ACRES, MORE OR LESS.

ENCUMBRANCES ON AIRPORT PROPERTY						
PARCEL/TRACT #	FAA PROJECT #	ACQUIRED FROM	INTEREST	RECORDING DATA	ACREAGE	DATE
TRACT "2A"	N/A	FLYNN	FENCE RIGHT OF WAY EASEMENT	BK 218 PG 452	INCLUDED WITH 2A	11/29/60
TRACT "2A"	N/A	BAUER/DOUGHERTY	ACCESS EASEMENT	BK 357 MICRO PG 210	INCLUDED WITH 2A	12/20/91
TRACT "2A"	N/A	PUBLIC ROADWAY UTILITIES	UTILITY EASEMENT	BK 24 PG 12	INCLUDED WITH 2A	N/A
TRACT "2A"	N/A	MISSOULA ELECTRIC COOP	TRANSMISSION LINE EASEMENT	BK 542 MICRO PG 154	INCLUDED WITH 2A	05/20/98
TRACT "2A"	N/A	N/A	SUBDIVISION COVENANTS	BK 529 MICRO PG 677	INCLUDED WITH 2A	02/03/98
PARCEL "R1" TRACT "1"	AIP 3-30-0056-32	PRUYN	TRANSMISSION LINE EASEMENT	BK 60 MICRO PG 1558	INCLUDED WITH R1-T1	08/01/74
PARCEL "R1" TRACT "1"	AIP 3-30-0056-32	MISSOULA COUNTY	CLEAR ZONE EASEMENT	BK S PG 540	INCLUDED WITH R1-T1	12/10/57
PARCEL "R1" TRACT "1"	AIP 3-30-0056-32	MISSOULA ELECTRIC COOP	TRANSMISSION LINE EASEMENT	BK 540 MICRO PG 1838	INCLUDED WITH R1-T1	05/11/98
PARCEL "R1" TRACT "1"	AIP 3-30-0056-32	MISSOULA COUNTY	HIGHWAY RIGHT OF WAY EASEMENT	BK 139 PG 252	INCLUDED WITH R1-T1	08/07/45
PARCEL "R1" TRACT "1"	AIP 3-30-0056-32	MONTANA POWER	TRANSMISSION LINE EASEMENT	BK 169 MICRO PG 736	INCLUDED WITH R1-T1	12/09/81
PARCEL "R1" TRACT "1"	AIP 3-30-0056-32	MONTANA POWER	PIPELINE RIGHT OF WAY EASEMENT	BK 432 MICRO PG 1909	INCLUDED WITH R1-T1	01/10/95
PARCEL "R1" TRACT "1"	AIP 3-30-0056-32	MONTANA POWER	ELECTRICAL POWER LINE EASEMENT	BK 566 MICRO PG 415	INCLUDED WITH R1-T1	12/17/98
PARCEL "R1" TRACT "1"	AIP 3-30-0056-32	MISSOULA COUNTY	SANITARY SEWER LINE EASEMENT	BK 699 MICRO PG 617-618	INCLUDED WITH R1-T1	02/14/03
PARCEL "R1" TRACT "1"	AIP 3-30-0056-32	MONTANA POWER	TRANSMISSION LINE EASEMENT	BK 169 MICRO PG 736	INCLUDED WITH R1-T1	12/09/81
PARCEL "R1" TRACT "1"	AIP 3-30-0056-32	SPRINT COMMUNICATION	COMMUNICATION LINE EASEMENT	BK 335 MICRO PG 1365	INCLUDED WITH R1-T1	08/21/91
PARCEL "R1" TRACT "1"	AIP 3-30-0056-32	WASHINGTON DEVELOPMENT	PUBLIC UTILITY EASEMENT	BK 685 MICRO PG 278	INCLUDED WITH R1-T1	07/16/02
PARCEL S & PARCEL J	N/A	UNITED STATES OF AMERICA	TAXIWAY EASEMENT	BK 615 PG 0945	0.92	05/06/03
MULTIPLE	N/A	FLYNN	DRAINAGE MAINTENANCE EASEMENT	BK 858 PG 270	N/A	07/16/02
MULTIPLE	N/A	CITY OF MISSOULA	SANITARY SEWER EASEMENT	BK 880 PG 672	N/A	07/22/11
PARCELS 3 & 5	N/A	QWEST / CENTURY LINK	COMMUNICATION LINE EASEMENT	BK 996 PG 1272	N/A	08/29/16
PARCELS 1, 3, & 5	N/A	NORTHWESTERN ENERGY	UNDERGROUND ELECTRIC EASEMENT	BK 1005 PG 74	N/A	10/31/18
PARCEL "R"	N/A	CITY OF MISSOULA	SANITARY SEWER LINE EASEMENT	BK 699 MICRO PG 609	N/A	2/14/03

ABBREVIATIONS


(E) - EXISTING
(F) - FUTURE
(P) - POTENTIAL POST PLANNING PERIOD
(R) - RELOCATED
(CA) - CRITICAL AREA
(TBR) - TO BE REMOVED

NOTES

1. THIS DRAWING REFLECTS PLANNING STANDARDS SPECIFIC TO THIS AIRPORT AND IS NOT A PRODUCT OF DETAILED ENGINEERING DESIGN ANALYSIS. IT IS NOT INTENDED TO BE USED FOR CONSTRUCTION DOCUMENTATION OR NAVIGATION.

FAA REVIEW
01/2026

M:\0380000-MAINT\PROJECTS\2025\25\14\PROPERTY MAP EXHIBIT A DESCRIPTION.DWG

VERIFY SCALE AND COLOR! THIS SHEET MAY BE REDUCED AND IS INTENDED TO BE IN COLOR. THE BAR BELOW WILL MEASURE ONE INCH AT ORIGINAL DESIGN SCALE AND RED, GREEN, AND BLUE WILL BE VISIBLE IF REPRODUCED CORRECTLY.  MODIFY SCALE ACCORDINGLY!		REVISIONS			
NO.	DESCRIPTION	BY	DATE		



DRAWN BY: <u> KDK </u>
DSGN. BY: <u> TSR </u>
APPR. BY: <u> SPS </u>
DATE: <u> 01/2026 </u>
Q.C. REVIEW BY: <u> SE </u>
DATE: <u> 10/2025 </u>

MISSOULA MONTANA AIRPORT AIRPORT LAYOUT PLAN		PROJECT NUMBER 3366.038
MONTANA		SHEET NUMBER 14
PROPERTY MAP EXHIBIT A DESCRIPTION		DRAWING NUMBER 14